



Appreciation to L. Earl Woolbright, 33 years at TWC and former Board Director at WFSDallas, on his recent retirement from the Texas Workforce Commission August 31, 2018! Thank You!

September Briefing Materials

September 19, 2018
7:30 A.M.

WORKFORCESOLUTIONS
G R E A T E R D A L L A S

A proud partner of the American  JobCenter network

Ross Tower 500 N. Akard St., Suite 2600, Dallas, Texas 75201

www.wfsdallas.com 214-290-1000

BOARD OF DIRECTORS MEETING
September 19, 2018 – 7:30 a.m.
Dallas Regional Chamber, 500 N. Akard St., Suite 2600, Dallas, Texas 75201

Call to Order — Ellen Torbert, Chair

Public Comment

Declaration of Conflict of Interest

Chairman's Comments

Consent Agenda

Action

- A. Review and Approval of August 15, 2018 Meeting Minutes and Ratification of Prior Minute Corrections
- B. Approval of Training Providers and Vendors
- C. Contracts and Purchases
- D. Endorsement of External Grant Applications and Agreements

Means, Ends and Expectations

Discussion/Action

- A. Monthly Financial Analysis
- B. Monthly Performance Analysis
 - Eligible Training Provider Review
- C. Employer Engagement – Sector Strategies
- D. Legislative Update

Closed Session Meeting with Board Attorney; Closed Meeting Pursuant to §551.071 Texas Open Meetings Act

President's Briefing

Discussion/Action

- A. Tax Filing 2017
- B. Authorization of Contracts, Partnerships, and Agreements
 - PY18/FY19 Allocations
- C. Policy
 - Parking
 - Apprenticeship
- D. Leases
- E. Quality Assurance and Oversight

General Discussion/Other Business

Adjourn

Persons with disabilities who plan to attend this meeting and who may need auxiliary aids, services, or special accommodations, should contact Workforce Solutions at 214-290-1000, two (2) working days prior to the meeting, so that appropriate arrangements can be made.

BOARD OF DIRECTORS

*Officers: Ellen Torbert, Southwest Airlines, Chair
Bill O'Dwyer, MIINC Mechanical, Vice Chair
Terrance F. Richardson, KPMG, Treasurer
Gilbert Gerst, Bank of Texas, Past Chair*

*Laurie Bouillion Larrea, President
Connie Rash, Secretary*

*Rebecca Acuña, PepsiCo
Cristina Criado, Criado and Associates
Holly Crowder, Beck
Rolinda Duran, Texas Workforce Solutions, Vocational Rehabilitation Services
Angela Farley, Dallas Regional Chamber
Kevin Faulkner, Texas Workforce Commission
Lewis E. Fulbright, Dallas AFL-CIO
Susan Hoff, United Way of Metropolitan Dallas
Carter Holston, NEC Corporation of America
Jim Krause, Krause Advertising
Leonor Marquez, Los Barrios Unidos Community Clinic
Dr. Joe May, Dallas County Community College District
Kerry McGeath, Desoto Public Library
Robert Mong, University of North Texas at Dallas
Jason Oliver, AT&T
Niki Shah, Baylor Scott & White
Michelle R. Thomas, JPMorgan Chase
Mark York, Dallas AFL-CIO*

**Meetings are held at Ross Towers, 500 N. Akard St., Suite 2600, Dallas, Texas 75201 at 7:30 A.M., unless otherwise noted.*

2018 MONTHLY MEETING SCHEDULE – Wednesday Meeting Dates

September 19, 2018	Approve New Annual Contracts (Workforce, Childcare, Youth, Professional Services) and Eligible Training Provider Review
October 17, 2018	Awards Ceremony, Annual Meeting, Annual Meeting, Election of Officers, CEO Evaluation by the Full Board
November 8, 2018	Red, White and You! Statewide Hiring Fair at Gilley's 1135 S. Lamar, (attendance optional)
November 28-30, 2018	TWC 22 nd Annual Conference, Hilton – Americas, Houston, Texas (attendance optional)

2019 MONTHLY MEETING SCHEDULE – Wednesday Meeting Dates

January 16, 2019	35 th Anniversary Event and Awards Welcome New & Returning Board Directors and Approve Annual Budget
February 20, 2019	Engage Auditors
April 17, 2019	Strategic Planning
May 15, 2019	WIOA Target Occupations List
August 21, 2019	Presentation and Acceptance of the Annual Audit
September 18, 2019	Approve New Annual Contracts (Workforce, Childcare, Youth, Professional Services) and Eligible Training Provider Review
October 16, 2019	Awards Ceremony, Annual Meeting, Election of Officers and Renewal of Staff Health Benefits, CEO Evaluation by the Full Board
TBA	Red, White and You! Statewide Hiring Fair (attendance optional)
TBA	TWC 23 rd Annual Conference, (attendance optional)

Consent Item – A

Review and Approval of Meeting Minutes August 15, 2018 and Ratification of Prior Corrections

Directors Present	Directors Present(cont'd)	Directors Absent
Holly Crowder	Jason Oliver	Rebecca Acuna
Rolinda Duran	Terrance Richardson,	Cristina Criado
Kevin Faulkner	Treasurer	Angela Farley
Lewis Fulbright	Niki Shah	Dr. Michael Hinojosa
Gilbert Gerst, Past Chair	Michelle R. Thomas	Susan Hoff
Carter Holston	Ellen Torbert, Chair	Jim Krause
Leonor Marquez	Mark York	Dr. Joe May
Robert Mong	Gabriella Draney Zielke	Kerry McGeath
		Bill O'Dwyer, Vice Chair

MINUTES

Call To Order/Welcome

Chair, Ellen Torbert called the Board of Directors' meeting to order at 7:47 a.m. and welcomed everyone in attendance. A quorum was present.

Public Comment – None

Declaration of Conflict of Interest –Chair Torbert asked for Board of Directors' Declaration of Conflict of Interest on any of the Action Item: Terrance Richardson, Rolinda Duran and Kevin Faulkner -- ResCare, TWC and any state agency matters.

Report from Finance Committee Meeting

Committee Members

Terrance Richardson, WFS Greater Dallas Board Treasurer, Committee Chair

Angela Farley, Leonor Marquez, Jason Oliver, Gabriella Draney Zielke, Committee Members

Auditors:

Kevin Smith, CPA, Partner, Michelle Buss, Audit Manager, Crowe LLP

Due to limited availability, a formal committee meeting was not held.

I. Acceptance of 2017 Audit

Crowe LLP representatives Kevin Smith, Audit Partner and Michelle Buss, Audit Manager provided the completed 2017 Annual Audit to CFO Mike Purcell July 26. The representatives reported the following:

- Unmodified opinion
- No significant deficiencies or material weaknesses
- No findings or questioned costs
- No management letter necessary

II. Ratification of Insurance Policies

Renewal of Annual Insurance Policies was provided by MHBT, a Marsh & McLennan Agency LLC company in keeping with our Risk Management. A summary of the recommendations was attached.

In light of an absence of a committee meeting, it was recommended that the Board accept these items for consideration and approval based upon staff recommendations and review by the individual members. Recommendation to accept the 2017 Annual Audit and ratification of insurance policies.

Gilbert Gerst made the motion to accept the above recommendations. The motion passed with Leonor Marquez seconding.

Chairman's Comments

- Appointment of Nominating Committee – Gilbert Gerst appointed a nominating committee consisting of Gilbert Gerst, Chair, Niki Shah and Rebecca Acuna. They will appoint officers for the upcoming year.

Consent Agenda

A. Review and Approval of May 16, 2018 Meeting Minutes

B. Ratification of Prior Minute Corrections (Provided by Legal Counsel)

The following amends and corrects the April 18, 2018 Board Meeting Minutes:

On April 18, 2018, President's Briefing Item A – the Board met and conducted a closed session with the Board Attorney pursuant to certain Sections of the Texas Government Code including, without limitation, 551.071 (Consultation with Attorney) and 551.074 (Personnel Matters). Closed session discussion items related to potential Board staff benefit plans changes and the Board

President annual performance review and compensation. In reconvened public Board session, director Gilbert Gerst made the motion to accept the proposed personnel related action regarding Board President compensation discussed in closed session with Terrance Richardson seconding such motion.

The following amends and corrects the May 16, 2018 Board Meeting Minutes:

On May 16, 2018, the Board met and conducted a closed session with the Board Attorney pursuant to certain Sections of the Texas Government Code including, without limitation, 551.071 (Consultation with Attorney) and 551.074 (Personnel Matters). Closed session discussion items related to Board staff benefit plans changes and related trust creation for plan related assets administration. In reconvened public Board session, director Jim Krause made the motion to accept the proposed personnel related action and the attached, related Board resolutions discussed in closed session with Susan Hoff seconding such motion.

C. Approval of Training Providers and Vendors

Training Providers

It was recommended that the Board of Directors give authorization to approve vendors' training programs as presented in the board packet. Those not approved were not on the targeted occupations list, outside of the workforce area, or above the board's maximum training amount according to policy.

D. Contracts and Purchase

Retail Pay\$

WFSDallas completed negotiations with Penn Foster to support the efforts of the Walmart project, Retail Pay\$. Penn Foster will provide a customized and interoperable digital learning platform which includes a broad portfolio of soft skills, certificate and pre-apprenticeship programs, an accredited high school completion program. The Penn Foster Enterprise License will provide 2,200 learners access to the digital learning platform for 24 months starting August 1, 2018 – July 31, 2020. The contract in the amount of \$400,000 was executed July 1, 2018 to allow development time for the portal. The Retail Pay\$ budget also includes the purchase of tablet computers to be used by program learners to access online curriculum. Staff requested approval to purchase 950 tablet computers (Samsung Tab E9.6, 16 GB, WIFI) at a cost of \$149.99/unit from Walmart for a total of \$142,490.50.

Staff requested ratification of the Penn Foster agreement in the amount of \$400,000 to include a 24 month enterprise license ending July 31, 2020 to serve 2,200 learners. Staff also requested approval to purchase 950 Samsung tablets at a total cost of \$142,491.

Consultant Services for Project Management Amendment

Staff requested an extension to the existing agreement with Sharon Dehn, Independent Consultant, through June 30, 2019 to continue providing consulting services for project management and special projects at \$1,500 per week a slight increase from the existing agreement rate of \$1,200 per week. Additional services have been negotiated as a result of additional requirements in the new grant as well as assisting with professional development activities in this program year.

It was recommended that the Board give authorization to extend the existing agreement with Sharon Dehn, Independent Consultant at \$1,500 per week as presented above.

E. Endorsement of External Grants and Partnerships

Federal and State external funding sources often require review and support from the local workforce development board. Board staff evaluates grants for cost reasonableness, appropriateness of program activities, employer demand, and quality outcomes. These applications occupationally request partnership and/or financial support. The following applications/partnership presented to the Board for endorsement.

Partnership	Status	Program Overview
Texas Workforce Commission	Pending	Dallas County Community College, Bill J. Priest, Cedar Valley College, and El Centro College propose a \$567,890 to serve 208 current workers and 54 new workers. This grant will offer Health care training with employer partners (Children's Health System of Texas, Medical City Healthcare, Methodist Health System, Texas Health Resources, and Texas Scottish Rite Hospital for Children).
Texas Workforce Commission	Pending	Dallas County Community College proposes \$279,999 for an apprenticeship program for electricians, tradeshow decorators, and television production technicians. This program targets cities within Dallas, Lubbock, and Irving.

It was recommended that the Board give authorization to approve grant applications and partnership, as presented above.

Carter Holston made the motion to approve staff's recommendations on the Consent Agenda. The motion passed with Holly Crowder seconding. Abstentions as noted above.

Means, Ends and Expectations

A. Monthly Financial Analysis

President Larrea referenced Pages 15-18 of the board packet and mentioned the blue lines will be address in President's Briefing.

B. Monthly Performance

President Laurie Larrea referenced Pages 19-22 of the board packet. She mentioned Page 19 which illustrates two missing performance measures – Choices Full Work Rate and # of Employers Receiving Workforce Assistance. She briefed the board on the multiple strategies and technical assistance efforts underway.

C. Employer Engagement

President Larrea referenced Page 23 and 30 of the board packet and invited Lynn Hoffman to the podium to discuss Employer Service ES 2020 Sector Strategy Report and community engagement.

D. Legislative Update

Linda Davis, VP External Relations referenced Page 31 of the board packet and gave a legislative update.

President’s Briefing

A. ChildCareGroup Presentation

Due to the significant funding increase in childcare assistance, Tori Mannes was invited to make a presentation describing the board’s current system and proposed response to the ramp up.

B. Authorization of Contracts, Partnerships, and Agreements

Ratification of Contracts

In May, Board authorization was given to the President to act on contracts and policy issues for workforce funding streams as appropriate. Several contracts were modified with extensions and/or additional funds to cover costs of these services. Ratification of the following contracts was requested:

- **ResCare Workforce Center Contract Amendment**
 - \$104,000 in Supplemental Nutrition Assistance Program Employment & Training (SNAP E&T) inclusive of \$28,000 in SNAP Able-Bodied Adults Without Dependents (ABAWD);
 - \$202,500 in Wage Services for Paid Work Experience (Vocational Rehabilitation Services funds);
 - up to \$42,000 in Workforce Innovation and Opportunity Act Dislocated Worker;
 - \$53,610 in Child Care Development Funds (CCF);
 - \$82,000 in Employment Services funds; and
 - \$26,000 in Veteran Services funds.
- **ChildCareGroup Contract Amendment**
 - \$189,452 in operations to cover costs of additional staff and fringe benefits due to increased child care enrollments;
 - \$9,116 in recoupment funds for direct care;
 - \$1,090,845 in Department of Family and Protective Services (DFPS) funds for direct care; and
 - \$5,286,112 in CCF funds for direct care.
- **Gulf Coast Trades Center Contract Amendment**
 - \$50,000 in Youth funds to cover cost of additional youth referred to Gulf Coast Trades Center’s youth program from the Dallas County Probation Department. These funds assists participating youth with continuing education, job readiness and work experience while enrolled in the residential program.

It was recommended that the Board give authorization to ratify contract amendments to ResCare, ChildCareGroup, and Gulf Coast Trades Center as presented above.

Adult Education and Literacy (AEL) Contract Ratification

The Board was awarded a new AEL grant from Texas Workforce Commission (TWC), effective July 1, 2018 through June 30, 2020. Staff has negotiated with our existing partners: Dallas County Community College District, Irving ISD, Richardson ISD, Wilkinson Center, and ResCare Workforce Services to provide AEL services to meet the grant requirements. All contracts are contingent on receipt of all grant funds and performance targets from TWC. Contracts will be reviewed at year end for continued services and additional funds in year two.

AEL Consortium Partners	Budget
Dallas County Community College District	\$ 4,250,000
Irving ISD	\$ 645,000
Richardson ISD	\$ 385,000
Wilkinson Center	\$ 1,085,000
ResCare Workforce Services*	\$ 100,000

**ResCare Workforce Services – doesn’t provide curriculum, but provides outreach efforts through our workforce system; assist with administration of assessment testing during registration at partner sites; may participate at orientations, offers job search and resume workshops, recruitment of employers to host on-site AEL classes for their employees; and on-site job fairs, job readiness and WIOA services at all AEL locations.*

It was recommended that the Board give authorization to contract with the AEL Consortium partners at cost not to exceed as presented above contingent upon receipt of all grant funds and performance targets.

Mark York made the motion to accept the above two recommendations. The motion passed with Leonor Marquez seconding.

Terrance Richardson abstaining.

Dallas Independent School District Lease Agreement

The existing lease with Dallas ISD for space, technology and maintenance at Arcadia Park where AEL services are provided expires on September 30, 2018. DISD has provided a one-year extension option at an increased rate of \$9,500 per month from \$7,339 per month (83 cents per square foot) due to additional maintenance provided by DISD inclusive of custodial and network services. The space is 31,150 square feet at \$3.66 per square foot annually. Staff requested approval of the one year extension through September 30, 2019 provided no other options can be identified.

The board has canvassed the area thoroughly and found that no other appropriate learning space is available in this location. Additional options would include breaking into smaller spaces. The boards increase costs inclusive of facility, stability for the customer/learner, parking and continuation of a full service environment is \$25,932 as compared to matching existing rent of \$2.82 plus moving costs approximately \$10,000 costs for cabling and possible internet and routers would be well over \$80K plus assuming the cost of maintenance for 30,000 sq. ft. The \$25,932 appears to be a bargain and prevents disruption.

It was recommended that the board give authorization to approve the extension to the existing lease agreement with Dallas ISD to continue providing adult education & literacy classes at Arcadia Park for the period of October 1, 2018 through September 30, 2019 at the increase rate of \$9,500 per month.

Leonora Marquez made the motion to accept the above recommendation. The motion passed with Holly Crowder seconding.

Additional Child Care Quality Funding In June, Texas Workforce Commission approved additional Child Care Development Funds through the Child Care and Development Block Grant (CCDBG) to apply to child care quality improvement activities. A discussion paper was presented in a July TWC Commissioner meeting outlining possible activities and funding limitations. Upon receipt of clarification and grant funds, the Board will release a procurement soliciting additional innovative quality activities to enhance quality child care in Dallas County. These funds are part of the unexpected sums provided by Congressional action last February. The Boards planned allocations include quality funding and those services should be uninterrupted. The new funding provides an opportunity for innovation and exploration. The Board anticipates approximately \$1.2M. All quality applications are encouraged, including existing quality providers.

C. Policy

I. Training Provider – Training Provider policy T0108 is amended to clarify a long standing practice in our scholarship programs. "The Board approved/negotiated training cost on the Eligible Training Provider System is considered the maximum training cost allowable, excluding support services. We anticipate that PELL grant applications will be applied to negotiated expenses or supportive services, BUT that no student referred by WFSDallas or our contractors will be encouraged or required to apply for other grants or loans. The cost of training as approved is the full cost of the training activity."

II. ChildCare – In accordance with WD Letter 12-18, staff amended policy number S0208 Provider Reimbursement Rates to reflect the increased child care provider reimbursement for all nonrelative provider types effective August 1, 2018, for all age groups and rate types (full and part):

- Regular (non-TRS) reimbursement rates will increase 2 percent.
- Texas School Ready (TSR!) provider rates will be set at the greater of 105 percent of the new regular provider rates or the Board's current TSR! rates.
- TRS rates will be set at the greater of the Board's current TRS rates, as follows:
 - TRS 4-star providers' reimbursement rate will be set to the 75th percentile of the local workforce development area's market rate as indicated by the 2017 Market Rate Survey.
 - TRS 3-star providers' reimbursement rate will be set to 90 percent of the Board's 4-star rate.
 - TRS 2-star providers' reimbursement rate will be set to 90 percent of the Board's 3-star rate.

It was recommended that the board ratification to approve the policies described above.

Terrance Richardson made the motion to accept the above two recommendations. The motion passed with Mark York seconding.

E. Quality Assurance and Oversight – No issues to discuss

General Discussion/Other Business

Adjourn 9:32 a.m.

Consent Item – B
Approval of Training Providers and Vendors

Training Provider	Course	Hours	Cost	Approved	Not Approved
360Academy	CCNAX Interconnecting Cisco Network Devices Accelerated	50	\$4,190		X
360Academy	Cisco Certified network associate	70	\$6,690		X
360Academy	CCNP - Route and Switch	155	\$13,975		X
360Academy	CompTIA/ITIL Foundations	126	\$11,125		X
360Academy	PMP CAMP ACP Scrum Master	91	\$9,965		X
360Academy	MCSA - Windows Server Solutions Associate	105	\$8,965	X	
360Academy	MCSA SQL Server Solution Associate	105	\$9,280		X
360Academy	MCSE Business Intelligence Solutions Expert	70	\$6,285		X
360Academy	MSCE Data Platform Solution Expert	56	\$5,285		X
360Academy	Server Administration I	84	\$7,683		X
360Academy	Windows Administration I	105	\$9,480	X	
360Academy	Cloud Administration I	94	\$8,447		X
360Academy	Cloud Administration II	84	\$8,033		X
360Academy	Data Management I	70	\$6,320		X
360Academy	Data Management II	70	\$6,320		X
360Academy	Data Management III	56	\$5,620		X
360Academy	Server Administration II	140	\$11,980		X
360Academy	CCNAX Security	85	\$7,390	X	
Alpha Medical Institute	MEDICAL BILLING & CODING TECHNICIAN	790	\$12,950		X
El Centro College	Paralegal Associate in Applied Science	1536	\$6,055	X	
Texas A&M University - Corpus Christi	Six Sigma Black Belt	200	\$2,695	X	
Texas State Technical College North Texas Center	Structural Welding Certificate	1120	\$9,560		X

RECOMMENDATION: Board authorization to approve vendors' training programs, as presented above. Those not approved were not on the targeted occupations list, outside of the workforce area, or above the board's maximum training amount according to policy.

Consent Item – C
Contracts and Purchases

I. DCCCD-Richland College (Garland Campus) Youth Contract Amendment

Richland College Garland Campus has requested to voluntarily de-obligate \$425,000 of their existing youth funds due to the lack of enrollments in training opportunities as of August 2018. RLC continues to outreach youth with three classes that begun at the beginning of September and three additional planned. However, RLC is unable to expend their existing budget by the end of September 30th.

RECOMMENDATION: Board authorization to amend DCCCD-Richland College Garland Campus existing contract de-obligating funds in the amount of \$425,000.

II. Texas Rising Star (TRS) Assessor Services Payment Structure

In partnership with Tarrant and North Central workforce boards, we have contracted TRS Assessors to assist us in certifying and recertifying child care providers as TRS quality providers. The contracted Assessors are listed on a Vendor's List and provide these services on an as needed basis. The TRS Assessor Services Payment Structure was originally created based upon licensed capacity of the child care facility. After further review of the assessment process, it was determined that the payment structure should be revised to number of classrooms rather than the total amount of children that could be served within the facility. Staff requests to change the structure with the new program year. This structure will allow the Assessors to invoice according to the number of classrooms assessed as presented below:

Facility Classrooms	Formal Assessment / Recertification	Monitoring Visit	Board Approved Meetings
1-4 Classrooms	\$ 600.00	\$ 200.00	
5-8 Classrooms	\$ 800.00	\$ 300.00	
9-12 Classrooms	\$ 1,000.00	\$ 500.00	
13-16 Classrooms	\$ 1,200.00	\$ 600.00	
17-20 Classrooms	\$ 1,400.00	\$ 700.00	
20+ Classrooms	\$ 1,600.00	\$ 800.00	
			\$ 50.00

RECOMMENDATION: Board authorization to revise the TRS Assessor Services Payment Structure as presented above, effective October 1, 2018.

III. Retail Pay\$

In March, the Board approved the Walmart Grant for Retail Pay\$ in the amount of \$1,771,576. Budgetary changes are necessary as several parts of the grant have evolved causing the need to make revisions to program activities. Initially, all Walmart training funds \$850,000, and \$468,374 in staff costs were awarded to ResCare. In August, the Board approved \$400,000 for the enterprise license with Penn Foster to serve 2,200 learners. This action required a reduction in the ResCare's awarded amount. Additionally, it was anticipated that ResCare would take the lead in project development and implementation. However, as the project progressed it was determined that the development and implementation role would be performed by Board staff. Staff requests reducing ResCare's original award by \$293,374 to cover staffing at the Board and implementation costs through December 2019. ResCare will use the remaining \$175,000 to manage data entry and ITA processing.

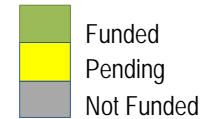
RECOMMENDATION: Board authorization to amend ResCare's original award by \$693,374 de-obligating costs of operations and pass-through funds as presented above.

IV. Careers in TX Industry

TWC provides a small contract (Careers in TX Industry) to connect us to in-school youth, and distribute economic information regarding career choice. We are working with Dallas Promise, Education Opens Doors, and their selected vendor to create a web page, detailed career exploration materials, and an event with local ISDs. We hope to provide materials to as many youth as possible including the 36,000 eighth graders currently attending school in Dallas County.

RECOMMENDATION: Board authorization to contract with appropriate parties to deliver this package for approximately \$50,000.

Consent Item – D
Endorsement of External Grants and Partnerships



Federal and State external funding sources often require review and support from the local workforce development board. Board staff evaluates grants for cost reasonableness, appropriateness of program activities, employer demand, and quality outcomes. These applications occupationally request partnership and/or financial support. The following applications/partnership presented to the Board for endorsement.

Pending applications		Program Overview
Texas Workforce Commission		WFSDallas, as the grant recipient, will partner with the Dallas County Community College to respond to the Request for Applications ApprenticeshipTexas. Approximately \$200,000 will be requested to serve employers including but not limited to (DFW Airport, SW Alliance, Organ Donor Transplant and others).

Previously Presented Pending Status

Funding Source/		Program Overview
Texas Workforce Commission		Dallas County Community College, Bill J Priest, Cedar Valley College, and El Centro College propose a \$567,890 to serve 208 current workers and 54 new workers. This grant will offer Health care training with employer partners (Children’s Health System of Texas, Medical City Healthcare, Methodist Health System, Texas Health Resources, and Texas Scottish Rite Hospital for Children).
Texas Workforce Commission		Dallas County Community College proposes \$279,999 for an apprenticeship program for electricians, tradeshow decorators, and television production technicians. This program targets cities within Dallas, Lubbock, and Irving.
Texas Workforce Commission-Jobs and Education for Texans RFA		Richland College offers CTE courses in digital fundamentals and microcomputer control. It is projected to train 126 students as logic analyzers, which is an essential technology for many companies and essential to mastering complex digital circuitry and solid state machines. Partners include: Micropac, General Dynamics, Volt, Freeflight systems, and Maxim Integrated.
Texas Workforce Commission – Jobs and Education for Texans RFA		Richardson ISD offers CTE courses in advanced manufacturing and robotics for the high demand occupation, Machinist. The Advanced Manufacturing and Robotics program provides students with a solid foundation in using industry-based equipment, such as computer numerical control systems and NIMS certifications. Through the use of industry standard equipment and joint training with Richardson ISD and Richland faculty, students will be prepared for careers in manufacturing starting as machinists and moving to CNC and advanced programmers.
Texas Workforce Commission Dual Credit Career and Technical Education Program		Eastfield College proposes to increase and expand opportunities in Heating, Ventilation, and Air Conditioning industry requesting \$182,535 for 50 dual credit students (partners include DISD Spruce High School, Seagoville High School, DISD, Garland, Mesquite and Sunnyvale ISD schools, and Five Star Heating and AC and other industry partners. Funding will enhance three existing dual credit programs in career and technical education.
Texas Workforce Commission Dual Credit Career and Technical Education Program		Cedar Valley College will partner with National Coalition of Certification Centers (NC3) and Trane have recommended strategic enhancement of our existing HVAC program in order to provide our dual-credit students with the necessary skills and credentials needed for high wage employment in the Heating/AC Mechanic field. CVC has requested \$225,000.
Texas Workforce Commission		Brookhaven College is partnering with Thomson Reuters to train 370 current workers and 123 new workers in business technical skills for a grant totaling \$910,800.
Texas Workforce Commission		El Centro College collaborates with Dean Management and Oak Farms Dairy to train 75 current workers requesting \$130,086.
		Eastfield College collaborates with the Bottling Group to offer 10 new hires and 102 current workers training with a request of \$190,344.
		Brookhaven College coordinating with Hilite International Automotive to provide training to 15 new hires and 252 current workers with a request of \$327,250.
City of Dallas		Cedar Valley College submitted an application for a 12-mnth Skills Development Fund grant project in the amount of \$1,101,294 to train 613
		North Lake College and Cardinal Financial Services are submitting this request for a 12-month Skills Development Fund (SDF) grant project in the amount of \$395,675 to train 107 new employees (\$2,969/trainee) a total of 100 percent (100%) new jobs.

RECOMMENDATION: Board authorization to approve grant application presented above.

BOARD SUMMARY REPORT - CONTRACTED MEASURES

Year-to-Date Performance Periods*

BOARD NAME: **DALLAS**

FINAL RELEASE
As Originally Published 9/13/2018
JULY 2018 REPORT

Status Summary		With Positive Performance (+P):	Meeting Performance (MP):	With Negative Performance (-P):	% +P & MP											
Contracted Measures		8	8	3	84.21%											
Source	Measure	Status	% Current Target	Current Target	EOY Target	Current Perf.	Prior Year End	2 Years Ago YE	YTD Num	YTD Den	QTR 1	QTR 2	QTR 3	QTR 4	From	To
Notes																

Reemployment and Employer Engagement Measures

TWC	Claimant Reemployment within 10 Weeks	MP	103.65%	55.33%	55.33%	57.35%	55.96%	57.09%	18,374	32,037	60.84%	55.15%	57.63%	52.37%	7/17	4/18
TWC	# of Employers Receiving Workforce Assistance	-P	92.37%	9,886	11,399	9,132	11,067	12,190	----	----	4,581	4,484	4,844	3,305	10/17	7/18

Program Participation Measures

TWC	Choices Full Work Rate - All Family Total	-P	89.08%	50.00%	50.00%	44.54%	49.62%	45.53%	200	447	46.18%	41.75%	47.29%	39.78%	10/17	7/18
TWC	Avg # Children Served Per Day - Combined (Discrete Month)	-P	94.65%	10,700	11,450	10,128	n/a	n/a	222,824	22	n/a	n/a	n/a	n/a	7/18	7/18
TWC	Avg # Children Served Per Day - Combined	n/a	n/a	n/a	n/a	11,647	10,923	10,824	2,527,401	217	12,802	11,722	10,931	10,128	10/17	7/18

1. Because of the significant increase in CCDF funding requires a significant ramp-up in kids served per day, CC performance accountability has been shifted to focus on discrete monthly performance levels that compares performance for the month with each Board's ramp-up plan and BCY19 initial targets. A Bd is considered to be at -P if the Discrete Monthly performance is less than 95% of the Discrete Monthly Ramp-Up Target or greater than 102% of the Initial Total BCY 2019 Target.

WIOA Outcome Measures

LBB-K	Employed/Enrolled Q2 Post Exit - C&T Participants	+P	109.69%	64.00%	64.00%	70.20%	70.28%	69.52%	50,119	71,396	70.14%	68.57%	71.25%	70.97%	7/16	6/17
LBB-K	Employed/Enrolled Q2-Q4 Post Exit - C&T Participants	+P	105.76%	80.00%	80.00%	84.61%	85.76%	85.10%	45,986	54,349	85.14%	83.90%	84.53%	85.03%	1/16	12/16
TWC	Median Earnings Q2 Post Exit - C&T Participants	+P	113.67%	\$4,648.00	\$4,648.00	\$5,283.52	\$5,169.14	\$4,904.25	n/a	47,335	\$4,983.78	\$5,414.98	\$5,405.40	\$5,444.39	7/16	6/17
LBB-K	Credential Rate - C&T Participants	+P	148.96%	48.00%	48.00%	71.50%	72.60%	64.09%	690	965	67.29%	69.93%	70.24%	79.34%	1/16	12/16
DOL-C	Employed Q2 Post Exit - Adult	MP	96.53%	73.40%	73.40%	70.85%	76.89%	76.97%	491	693	71.30%	72.49%	65.12%	76.47%	7/16	6/17
DOL-C	Employed Q4 Post Exit - Adult	MP	99.93%	70.60%	70.60%	70.55%	75.95%	78.80%	563	798	66.85%	68.16%	71.30%	75.66%	1/16	12/16
DOL-C	Median Earnings Q2 Post Exit - Adult	+P	112.43%	\$4,420.00	\$4,420.00	\$4,969.23	\$5,898.79	\$7,077.66	n/a	487	\$4,426.90	\$5,497.21	\$4,014.05	\$6,166.60	7/16	6/17
DOL-C	Credential Rate - Adult	+P	115.95%	69.30%	69.30%	80.35%	78.14%	80.58%	278	346	80.56%	81.44%	77.08%	82.72%	1/16	12/16
DOL-C	Employed Q2 Post Exit - DW	MP	99.43%	84.30%	84.30%	83.82%	85.71%	85.43%	145	173	85.29%	78.79%	78.12%	90.00%	7/16	6/17
DOL-C	Employed Q4 Post Exit - DW	MP	97.50%	86.00%	86.00%	83.85%	84.97%	82.97%	161	192	92.31%	78.85%	80.88%	87.88%	1/16	12/16
DOL-C	Median Earnings Q2 Post Exit - DW	+P	115.54%	\$7,990.00	\$7,990.00	\$9,232.00	\$8,531.67	\$8,145.00	n/a	143	\$7,437.20	\$9,266.65	\$9,457.98	\$9,793.92	7/16	6/17

Note: In some cases historic data not available at time of original publication (such as when a new measure is created) has been added to the MPR retroactively to allow trend analysis.

BOARD SUMMARY REPORT - CONTRACTED MEASURES

Year-to-Date Performance Periods*

BOARD NAME: **DALLAS**

FINAL RELEASE
As Originally Published 9/13/2018

JULY 2018 REPORT

Source	Measure	Status	% Current Target	Current Target	EOY Target	Current Perf.	Prior Year End	2 Years Ago YE	YTD Num	YTD Den	QTR 1	QTR 2	QTR 3	QTR 4	From	To
--------	---------	--------	------------------	----------------	------------	---------------	----------------	----------------	---------	---------	-------	-------	-------	-------	------	----

WIOA Outcome Measures

DOL-C	Credential Rate – DW	MP	103.42%	77.00%	77.00%	79.63%	74.31%	73.98%	86	108	70.00%	80.00%	78.57%	93.75%	1/16	12/16
DOL-C	Employed/Enrolled Q2 Post Exit – Youth	MP	100.28%	69.10%	69.10%	69.29%	75.36%	57.61%	343	495	68.32%	70.49%	66.34%	72.07%	7/16	6/17
DOL-C	Employed/Enrolled Q4 Post Exit – Youth	MP	104.82%	67.60%	67.60%	70.86%	72.12%	67.65%	406	573	66.93%	71.78%	73.91%	69.67%	1/16	12/16
DOL-C	Credential Rate – Youth	+P	111.43%	65.20%	65.20%	72.65%	73.26%	53.38%	162	223	67.44%	66.13%	76.36%	79.37%	1/16	12/16

Note: In some cases historic data not available at time of original publication (such as when a new measure is created) has been added to the MPR retroactively to allow trend analysis.

Measure	Category 1: Claimant Reemployment						Category 2: WIOA Adult/DW		Category 3: Foster Youth						Category 4: Choices				
	Reemployment within 10 Weeks (% Target)		Reemployment within 10 Wks Wage Replacement				% EE Related to Training		% of Youth Participants Who Are Foster Youth		% Change in Youth Participants Who Are Foster Youth				Choices Full Work Rate - All Family				
	55%		45%				100%		45%		55%				100%				
Board	Current % Target.	Rank	Current Perf.	Rank	Avg Rank	Overall Rank*	Current Perf.	Rank	Current Perf.	Rank	Foster Youth Served		Percent Change	Rank	Avg Rank	Overall Rank*	Current Perf.	Rank	
												Current	Prior Year						

Quartile 1

Brazos Valley	116.11%	3	82.81%	5	3.9	5	66.67%	6	1.39%	6	1	1	0.00%	4	4.9	6	51.00%	6
Concho Valley	119.43%	2	86.92%	2	2	1	82.61%	3	5.88%	2	4	1	300.00%	2	2	1	56.01%	4
Golden Crescent	129.61%	1	83.16%	4	2.35	2	48.00%	7	10.00%	1	1	1	0.00%	4	2.65	2	68.60%	2
Middle Rio	104.72%	6	100.66%	1	3.75	4	73.81%	5	2.13%	5	1	0	(Infinity)	1	2.8	3	50.19%	7
North East	107.95%	5	80.89%	7	5.9	6	89.80%	2	2.56%	4	1	1	0.00%	4	4	5	52.42%	5
North Texas	114.69%	4	83.49%	3	3.55	3	74.29%	4	0.00%	7	0	2	0.00%	4	5.35	7	56.10%	3
Texoma	103.52%	7	82.06%	6	6.55	7	92.59%	1	4.65%	3	2	1	100.00%	3	3	4	71.16%	1

Quartile 2

Deep East	116.79%	5	83.24%	4	4.55	5	53.12%	6	7.02%	3	4	4	0.00%	2	2.45	3	40.52%	7
Heart of Texas	106.55%	7	82.41%	5	6.1	7	88.24%	1	0.00%	5	0	1	0.00%	2	3.35	5	43.36%	6
Panhandle	121.69%	3	78.06%	7	4.8	6	72.73%	3	8.60%	2	8	7	14.29%	1	1.45	1	59.38%	1
Permian Basin	123.19%	2	95.37%	1	1.55	1	52.78%	7	0.00%	5	0	0	0.00%	2	3.35	5	48.97%	4
South Texas	107.17%	6	91.83%	2	4.2	4	60.00%	4	0.00%	5	0	0	0.00%	2	3.35	5	56.54%	2
Southeast	134.63%	1	81.98%	6	3.25	2	76.19%	2	1.79%	4	2	2	0.00%	2	2.9	4	50.19%	3
West Central	116.82%	4	84.59%	3	3.55	3	57.14%	5	10.00%	1	5	5	0.00%	2	1.55	2	48.56%	5

Quartile 3

Cameron	109.06%	3	91.96%	1	2.1	1	80.80%	4	4.46%	2	5	1	400.00%	2	2	1	47.72%	6
Capital Area	107.64%	4	90.23%	2	3.1	4	79.21%	5	2.07%	5	4	6	-33.33%	5	5	4	56.25%	2
Central Texas	107.09%	5	86.72%	5	5	5	93.48%	1	2.04%	6	2	4	-50.00%	6	6	7	59.96%	1
Coastal Bend	116.62%	1	87.05%	4	2.35	2	70.83%	6	7.18%	1	13	8	62.50%	3	2.1	2	52.64%	4
East Texas	106.87%	6	86.24%	6	6	6	57.33%	7	3.68%	3	6	15	-60.00%	7	5.2	5	48.89%	5
Rural Capital	106.85%	7	84.96%	7	7	7	85.71%	2	2.88%	4	3	0	(Infinity)	1	2.35	3	55.60%	3
South Plains	112.95%	2	88.12%	3	2.45	3	82.69%	3	0.00%	7	0	3	0.00%	4	5.35	6	47.04%	7

Quartile 4

Alamo	112.57%	3	85.24%	6	4.35	5	77.86%	4	3.39%	4	19	23	-17.39%	4	4	3	63.31%	1
Borderplex	102.58%	6	90.72%	2	4.2	3	67.05%	5	2.46%	5	3	3	0.00%	2	3.35	2	56.20%	3
Dallas	103.65%	4	88.57%	3	3.55	2	62.18%	6	2.41%	6	11	14	-21.43%	5	5.45	7	44.54%	7
Gulf Coast	116.35%	2	83.13%	7	4.25	4	35.65%	7	4.60%	3	25	44	-43.18%	7	5.2	6	45.73%	6
Lower Rio	120.95%	1	95.11%	1	1	1	91.62%	1	0.90%	7	3	3	0.00%	2	4.25	5	62.20%	2
North Central	101.46%	7	85.45%	5	6.1	7	80.17%	3	5.05%	2	11	15	-26.67%	6	4.2	4	55.82%	4
Tarrant County	103.01%	5	87.76%	4	4.55	6	85.19%	2	6.70%	1	15	14	7.14%	1	1	1	51.34%	5
From	7/1/17		7/1/16				10/1/16		10/1/17				10/1/17				10/1/17	
To	4/30/18		3/31/17				9/30/17		7/31/18				7/31/18				7/31/18	

*(Based on Average Rank)

** Wage Replacement data is not available until the final release of the second month of each quarter. Until it is available, data from the prior quarter will continue to be used for scoring purposes.

AT-A-GLANCE COMPARISON - BOARD CONTRACTED MEASURES

Percent of Target (Year-to-Date Performance Periods)

FINAL RELEASE
As Originally Published 9/13/2018

JULY 2018 REPORT

Green = +P White = MP Yellow = MP but At Risk Red = -P

Board	Reemployment and Employer Engagement		Participation		WIOA Outcome Measures															Total Measures					
			Choices Full Work Rate-All Family Total	Avg # Children Svd Per Day-Comb (Discr. Mo)	C&T Participants				Adult				DW				Youth			+P	MP	-P	% MP & +P		
	Empl/ Enrolled Q2 Post-Exit	Empl/ Enrolled Q2-Q4 Post-Exit			Median Earnings Q2 Post-Exit	Credentia Rate	Employ- ed Q2 Post-Exit	Employ- ed Q4 Post-Exit	Median Earnings Q2 Post-Exit	Credentia Rate	Employ- ed Q2 Post-Exit	Employ- ed Q4 Post-Exit	Median Earnings Q2 Post-Exit	Credentia Rate	Empl/ Enrolled Q2 Post-Exit	Empl/ Enrolled Q4 Post-Exit	Credentia Rate								
	Clmnt ReEmpl within 10 Weeks	Emplrs Rcvg Wkfc Assist																							
Alamo	112.57%	106.01%	126.62%	95.61%	109.72%	105.53%	111.96%	133.65%	99.72%	102.06%	138.48%	173.24%	110.66%	101.08%	115.54%	110.90%	102.38%	105.55%	100.31%	13	6	0	100%		
Borderplex	102.58%	101.38%	112.40%	97.58%	102.06%	103.88%	115.51%	147.79%	102.46%	89.93%	49.34%	97.71%	96.58%	96.97%	121.41%	116.55%	106.68%	100.56%	88.89%	6	10	3	84%		
Brazos Valley	116.11%	110.05%	102.00%	100.24%	106.73%	101.24%	105.33%	162.67%	101.27%	109.75%	171.87%	148.03%	104.69%	99.50%	111.49%	108.36%	100.83%	109.94%	108.58%	13	6	0	100%		
Cameron	109.06%	100.59%	95.44%	99.21%	113.94%	105.03%	118.60%	177.06%	108.93%	109.73%	83.55%	121.18%	110.80%	107.85%	156.10%	115.25%	95.61%	120.50%	103.44%	13	5	1	95%		
Capital Area	107.64%	110.35%	112.50%	86.78%	111.89%	106.36%	125.02%	131.52%	102.02%	111.78%	118.39%	108.84%	97.14%	98.84%	104.94%	99.82%	95.89%	92.37%	115.42%	11	6	2	89%		
Central Texas	107.09%	94.13%	119.92%	88.64%	102.19%	103.90%	115.07%	132.23%	111.27%	108.82%	156.25%	92.86%	105.44%	109.10%	170.23%	87.62%	92.29%	100.93%	96.95%	10	4	5	74%		
Coastal Bend	116.62%	109.50%	105.28%	99.61%	106.91%	105.36%	111.35%	113.69%	108.23%	101.70%	103.69%	97.01%	112.09%	123.87%	134.79%	111.95%	119.61%	107.51%	93.81%	14	4	1	95%		
Concho Valley	119.43%	105.39%	112.02%	91.82%	111.75%	105.69%	101.52%	162.75%	111.02%	94.12%	131.31%	101.65%	90.17%	99.90%	103.31%	105.14%	104.77%	111.64%	139.19%	11	5	3	84%		
Dallas	103.65%	92.37%	89.08%	94.65%	109.69%	105.76%	113.67%	148.96%	96.53%	99.93%	112.43%	115.95%	99.43%	97.50%	115.54%	103.42%	100.28%	104.82%	111.43%	8	8	3	84%		
Deep East	116.79%	113.25%	81.04%	91.21%	108.64%	103.94%	111.11%	143.23%	102.10%	108.01%	153.42%	98.18%	102.39%	116.68%	129.20%	102.05%	114.50%	105.93%	118.64%	12	5	2	89%		
East Texas	106.87%	130.67%	97.78%	100.83%	110.22%	104.85%	112.80%	143.63%	96.92%	90.78%	113.34%	194.92%	97.00%	100.59%	107.01%	101.41%	106.49%	99.34%	126.42%	10	8	1	95%		
Golden Cresce	129.61%	99.79%	137.20%	98.10%	111.22%	105.63%	107.46%	156.92%	95.65%	100.12%	123.44%	127.38%	89.84%	139.75%	135.72%	104.50%	108.86%	115.56%	110.80%	13	5	1	95%		
Gulf Coast	116.35%	112.91%	91.46%	93.73%	102.52%	102.54%	112.37%	127.94%	101.58%	101.53%	123.50%	171.51%	105.37%	107.03%	120.87%	152.51%	105.63%	103.01%	90.52%	11	5	3	84%		
Heart of Texas	106.55%	111.58%	97.88%	80.94%	108.64%	102.50%	107.43%	113.65%	110.44%	95.07%	99.14%	123.17%	112.66%	88.02%	112.48%	160.55%	95.61%	105.80%	110.80%	12	5	2	89%		
Lower Rio	120.95%	108.17%	124.40%	99.94%	116.19%	103.79%	125.61%	168.83%	104.60%	100.28%	151.77%	110.69%	103.33%	106.74%	130.47%	108.17%	111.06%	101.98%	85.73%	12	6	1	95%		
Middle Rio	104.72%	95.67%	100.38%	105.35%	109.11%	100.88%	113.58%	185.81%	105.62%	116.51%	92.41%	112.63%	108.07%	107.34%	147.32%	128.04%	91.11%	111.18%	90.23%	12	4	3	84%		
North Central	101.46%	113.12%	111.64%	94.54%	105.95%	106.41%	117.08%	153.46%	102.71%	99.03%	102.33%	110.56%	97.71%	96.64%	117.93%	108.17%	125.41%	111.02%	122.17%	12	6	1	95%		
North East	107.95%	99.82%	104.84%	97.58%	110.59%	104.79%	117.40%	135.19%	95.76%	106.06%	181.98%	117.96%	100.31%	97.75%	98.77%	118.22%	102.96%	120.84%	135.18%	10	9	0	100%		
North Texas	114.69%	112.72%	112.20%	101.69%	109.55%	106.34%	114.06%	163.35%	104.31%	95.81%	94.03%	102.73%	94.34%	105.73%	126.42%	97.35%	102.46%	98.20%	144.79%	10	7	2	89%		
Panhandle	121.69%	103.21%	118.76%	97.18%	112.00%	105.68%	114.22%	168.23%	98.56%	103.26%	120.56%	111.32%	112.22%	109.88%	100.96%	114.15%	123.86%	110.90%	158.43%	14	5	0	100%		
Permian Basin	123.19%	115.35%	97.94%	106.38%	113.64%	107.80%	117.79%	148.81%	100.60%	121.54%	186.84%	120.22%	107.51%	106.08%	161.27%	95.34%	99.79%	138.03%	66.42%	14	4	1	95%		
Rural Capital	106.85%	103.69%	111.20%	86.59%	112.72%	108.34%	116.45%	96.73%	108.62%	109.59%	163.19%	105.63%	100.60%	96.63%	117.56%	142.51%	101.36%	102.89%	109.52%	12	6	1	95%		
South Plains	112.95%	105.53%	94.08%	94.98%	108.91%	101.94%	111.96%	135.06%	105.39%	98.98%	139.29%	103.83%	100.67%	108.56%	167.12%	127.70%	124.04%	112.77%	121.44%	13	4	2	89%		
South Texas	107.17%	103.85%	113.08%	100.66%	102.58%	105.01%	101.14%	170.02%	107.23%	105.05%	174.42%	122.96%	110.92%	108.04%	128.16%	97.35%	96.65%	83.01%	119.13%	12	6	1	95%		
Southeast	134.63%	111.83%	100.38%	100.84%	110.13%	103.06%	115.71%	88.77%	106.96%	102.13%	121.00%	94.99%	101.17%	104.15%	136.48%	189.41%	101.23%	100.26%	130.21%	9	8	2	89%		
Tarrant	103.01%	108.32%	102.68%	90.64%	107.95%	107.04%	111.70%	156.69%	102.28%	103.29%	136.64%	110.59%	111.67%	105.42%	108.86%	107.40%	101.19%	103.15%	128.16%	12	6	1	95%		
Texoma	103.52%	105.59%	142.32%	95.53%	109.63%	105.03%	121.45%	175.17%	106.02%	111.52%	144.45%	114.23%	104.46%	123.16%	123.23%	111.24%	105.51%	106.24%	104.89%	15	4	0	100%		
West Central	116.82%	99.19%	110.87%	97.43%	107.27%	103.71%	105.71%	155.77%	95.84%	116.15%	105.65%	106.27%	98.45%	104.29%	250.33%	113.40%	99.04%	110.47%	0.00%	11	7	1	95%		
+P	22	17	15	3	24	15	26	26	11	12	21	20	11	15	24	19	11	16	17	325					
MP	6	9	9	14	4	13	2	1	17	13	3	6	14	12	4	8	15	10	4	164					
-P	0	2	4	11	0	0	0	1	0	3	4	2	3	1	0	1	2	2	7	43					
% MP & +P	100%	93%	86%	61%	100%	100%	100%	96%	100%	89%	86%	93%	89%	96%	100%	96%	93%	93%	75%	92%					
From	7/17	10/17	10/17	7/18	7/16	1/16	7/16	1/16	7/16	1/16	7/16	1/16	7/16	1/16	7/16	1/16	7/16	1/16	1/16	From					
To	4/18	7/18	7/18	7/18	6/17	12/16	6/17	12/16	6/17	12/16	6/17	12/16	6/17	12/16	6/17	12/16	6/17	12/16	12/16	To					

Training Vendor Performance by Program

Entered Employment Q2 and Median Earnings Q2 are WIOA Customers that exited training programs between July 2016 - June 2017

Credential Rate are WIOA Customers that exited training programs January 2016 and December 2017

	Entered Employment Numerator	Entered Employment Denominator	%	Obtained Credential Numerator	Obtained Credential Denominator	%	Mean Quarterly Earnings
Indicates Missing Performance Measure.							
WFSDallas performance indicators		75%		75%			\$5,300
Information Technology/Telecommunications							
Asher College - Computer and Network Technician	11	15	73.33%	6	8	75.00%	\$ 6,849.82
Asher College - Computer Specialist and Networking Technician	7	10	70.00%	4	10	40.00%	\$ 11,539.16
Asher College - IT Network Engineer	2	2	100.00%	1	1	100.00%	\$ 8,367.99
Asher College - IT Server Administrator	2	2	100.00%	1	1	100.00%	\$ 2,941.60
Asher College - Network and Database Administrator	5	6	83.33%	2	4	50.00%	\$ 6,030.29
Asher College - PC Support Specialist	1	3	33.33%	2	2	100.00%	\$ 9,600.00
Binary Institute of Technology - CCNA Certification Preparation Training Program	3	3	100.00%	6	6	100.00%	\$ 7,982.38
Careers Institute of America - A+ Certification Training	1	1	100.00%	1	1	100.00%	\$ 12,155.02
Careers Institute of America - Cisco Networking Associate	1	1	100.00%	1	1	100.00%	\$ 3,332.45
CCI Training Center, Inc. - Computer And Network Administration - Arlington	3	6	50.00%	3	4	75.00%	\$ 10,237.43
CCI Training Center, Inc. - Computer And Network Administration - Dallas	4	10	40.00%	3	4	75.00%	\$ 6,909.83
CCI Training Center, Inc. - Computer Support and Information Security - Arlington	1	3	33.33%	1	1	100.00%	\$ 4,327.00
CCI Training Center, Inc. - Computer Support and Information Security - Dallas	4	4	100.00%	2	4	50.00%	\$ 6,640.40
CCI Training Center, Inc. - Computer Support Tech - Dallas	2	2	100.00%	2	2	100.00%	\$ 11,183.44
Glade Technical Institute - Network Administration	2	2	100.00%	2	3	66.67%	\$ 4,322.96
Joshua Career Institute - Cisco Network Associate (On-Line)	1	1	100.00%	1	1	100.00%	\$ 160.71
Lanecert Inc - CCNP Routing & Switching Training	1	1	100.00%	1	1	100.00%	\$ 25,080.00
LeaderQuest- CCNA	17	23	73.91%	14	16	87.50%	\$ 11,448.72
LeaderQuest - Computer User Support Specialist	26	33	78.79%	16	20	80.00%	\$ 11,976.07
LeaderQuest - Cyber Security Specialist	3	3	100.00%	1	3	33.33%	\$ 12,359.75
LeaderQuest - Information Security Analyst (ISA)	2	3	66.67%	2	3	66.67%	\$ 8,042.00
LeaderQuest - MCSA Windows Server 2012 Associate	1	1	100.00%	1	1	100.00%	\$ 21,294.87
LeaderQuest - Network Security Specialist	10	10	100.00%	10	11	90.91%	\$ 10,618.75
LeaderQuest - Network Support Specialist	8	10	80.00%	5	8	62.50%	\$ 7,525.95
New Horizons Computer Learning Center - A+/Network+ Technician Training	3	3	100.00%	2	2	100.00%	\$ 9,080.94
New Horizons Computer Learning Center - Cisco Certified Network Associate Training	8	8	100.00%	3	5	60.00%	\$ 8,800.81
New Horizons Computer Learning Center - MCAD using VB.NET Training	2	2	100.00%	2	2	100.00%	\$ 9,318.76
New Horizons Computer Learning Center - MCITP Server Administrator Training	4	4	100.00%	0	2	0.00%	\$ 5,600.16
New Horizons Computer Learning Center - Microsoft Certified System Engineer with Security Specialization Training	1	2	50.00%	1	2	50.00%	\$ 125.25
New Horizons Computer Learning Center - Microsoft Certified Technology Specialist: Web Applications Training	1	1	100.00%	1	1	100.00%	\$ 11,131.63
New Horizons Computer Learning Center - Network Systems Administrator Professional	1	5	20.00%	1	5	20.00%	\$ 17,004.00
Peloton College - Information Technology Support Professional	2	4	50.00%	2	2	100.00%	\$ 5,550.59
Richland College (DCCCD) - Microcomputer Maintenance and Networking Technician	0	1	0.00%	0	1	0.00%	\$ 51.00
Texas A&M University - Corpus Christi - Web Application Developer (Online)	1	2	50.00%	1	2	50.00%	\$ 19,080.00
Texas A&M University - Corpus Christi - Web Design Professional (GES517) - ONLINE ONLY	2	2	100.00%	1	2	50.00%	\$ 8,991.80
Texas A&M University - Corpus Christi - Webmaster (Online)	1	1	100.00%	0	1	0.00%	\$ 11,250.00
University of Texas at Austin, Center for Professional Education - CompTIA Server+ Certification	1	1	100.00%	1	1	100.00%	\$ 9,724.00

Training Vendor Performance by Program

Entered Employment Q2 and Median Earnings Q2 are WIOA Customers that exited training programs between July 2016 - June 2017

Credential Rate are WIOA Customers that exited training programs January 2016 and December 2017

	Entered Employment Numerator	Entered Employment Denominator	%	Obtained Credential Numerator	Obtained Credential Denominator	%	Mean Quarterly Earnings
Indicates Missing Performance Measure.							
WFSDallas performance indicators	75%			75%			\$5,300
Advanced Manufacturing/Engineering							
Eastfield College - Basic CADD Operator	1	1	100.00%	1	1	100.00%	\$ 11,931.25
Eastfield College - CADD	1	1	100.00%	0	1	0.00%	\$ 10,080.60
Richland College (DCCCD) - Engineering Technology - Electronics Technology Certificate	1	1	100.00%	0	1	0.00%	\$ 9,676.58
Business Management & Administration							
Arlington Career Institute - Administrative Assistant Program	1	1	100.00%	1	1	100.00%	\$ 2,032.53
Arlington Career Institute -Paralegal/Legal Assistant	2	4	50.00%	2	2	100.00%	\$ 6,773.39
Asher College - Office Accounting Specialist	6	9	66.67%	7	9	77.78%	\$ 6,175.00
Asher College - Office Administrator	1	1	100.00%	1	1	100.00%	\$ 6,259.46
Brightwood College - General Practice Paralegal (Day)	0	1	0.00%	1	1	100.00%	N/A
Brightwood College - General Practice Paralegal (Night)	2	2	100.00%	1	1	100.00%	\$ 7,777.71
CCI Training Center, Inc. - Basic Computerized Accounting - Arlington	2	3	66.67%	3	3	100.00%	\$ 12,225.00
CCI Training Center, Inc. - Basic Computerized Accounting - Dallas	1	1	100.00%	1	1	100.00%	\$ 2,382.12
Cedar Valley College (DCCCD) - Management Certificate	4	5	80.00%	2	2	100.00%	\$ 4,543.05
Center for Career Training - Office Specialist	0	1	0.00%	1	1	100.00%	N/A
Center for Career Training - Small Business Management	1	1	100.00%	1	1	100.00%	\$ 564.00
Eastfield College - Business Administration	1	2	50.00%	0	2	0.00%	\$ 11,169.64
Eastfield College - Business Office Systems & Support - Executive Assistant	3	4	75.00%	3	3	100.00%	\$ 7,070.60
Joshua Career Institute - Accounting Specialist	3	3	100.00%	1	2	50.00%	\$ 7,735.73
Joshua Career Institute -Office Management (On-Line)	1	1	100.00%	0	1	0.00%	\$ 6,341.00
Joshua Career Institute - Legal Assistant (On-Line)	0	1	0.00%	0	1	0.00%	\$ 5,487.02
New Horizons Consumer Learning Center - Business Administration Associate Program	1	2	50.00%	1	2	50.00%	\$ 6,964.90
New Horizons Consumer Learning Center - Business Administration Professional	1	3	33.33%	0	3	0.00%	\$ 1,070.59
New Horizons Consumer Learning Center - Project Management Professional Seminar	2	4	50.00%	2	4	50.00%	\$ 14,893.30
Peloton College - Business Office Assistant	3	4	75.00%	2	2	100.00%	\$ 4,903.26
Peloton College - Legal Administrative Assistant	5	5	100.00%	3	3	100.00%	\$ 10,541.89
Richland College (DCCCD) - Accounting/Office Specialist	4	6	66.67%	2	2	100.00%	\$ 2,368.93
Texas A&M University - Corpus Christi - Legal Secretary (Online)	0	1	0.00%	1	1	100.00%	N/A
Texas A&M University - Corpus Christi - Paralegal (Online)	1	1	100.00%	0	1	0.00%	\$ 7,293.99
True Solutions Inc. - Ultimate CAPM Exam Prep Seminar	1	1	100.00%	1	1	100.00%	\$ 1,849.00
True Solutions Inc. - Ultimate PMP Exam Prep Seminar	5	5	100.00%	2	2	100.00%	\$ 7,089.79
Western Governors University - B.S. Business Management	2	4	50.00%	0	4	0.00%	\$ 10,396.00
Education							
DISD Alternative Certification - (Mathematics 4th - 9th Grades)	1	1	100.00%	1	1	100.00%	\$ 6,034.00
DISD Alternative Certification - (Special Education Grades Pre K - 12)	4	4	100.00%	1	2	50.00%	\$ 9,529.31
Downs Educational Training & Consulting, LLC.- Texas (TEXES) Teacher Certification Training	1	1	100.00%	1	1	100.00%	\$ 7,603.35
Healthcare							
Alpha Medical Institute - Medical Billing & Coding Technician	1	2	50.00%	0	2	0.00%	\$ 5,119.11

Training Vendor Performance by Program

Entered Employment Q2 and Median Earnings Q2 are WIOA Customers that exited training programs between July 2016 - June 2017

Credential Rate are WIOA Customers that exited training programs January 2016 and December 2017

	Entered Employment Numerator	Entered Employment Denominator	%	Obtained Credential Numerator	Obtained Credential Denominator	%	Mean Quarterly Earnings
Indicates Missing Performance Measure.							
WFSDallas performance indicators	75%			75%			\$5,300
Asher College - Health Information Specialist	10	14	71.43%	5	7	71.43%	\$ 7,682.87
Asher College - Medical Records Specialist	5	9	55.56%	5	5	100.00%	\$ 8,481.51
CCI Training Center, Inc. - Health Information Specialist - Arlington	11	19	57.89%	8	8	100.00%	\$ 4,545.17
CCI Training Center, Inc. - Health Information Specialist - Dallas	2	3	66.67%	1	1	100.00%	\$ 4,698.62
iMed Health Training Center - Health Information Technology	12	14	85.71%	6	14	42.86%	\$ 3,504.01
iMed Health Training Center - Medical Billing and Coding	34	44	77.27%	23	28	82.14%	\$ 5,097.84
Peloton College - Electronic Health Records Technician	2	7	28.57%	6	6	100.00%	\$ 6,179.00
Professional Healthcare Education Service Inc. (PHES) - Nurse Refresher/Re-Entry and Remediation Program/FENS Program	1	1	100.00%	1	1	100.00%	\$ 3,805.62
Professional Healthcare Education Service Inc. (PHES) - Nurse Refresher/Re-Entry and Transition Program	1	2	50.00%	1	1	100.00%	\$ 12,452.00
Texas Career Institute - Medical Billing and Coding Training Program	4	6	66.67%	2	2	100.00%	\$ 8,921.45
Texas Career Institute - Pharmacy Technician Training Program	1	1	100.00%	1	1	100.00%	\$ 3,180.58
Urban Training Center - Health Information Technician/Medical Coding	1	1	100.00%	1	1	100.00%	\$ 6,247.14
Construction/Industrial Production							
Austin Career institute - Residential and Commercial Heating, Ventilation and Air Conditioning	1	1	100.00%	0	1	0.00%	\$ 520.00
Bill Priest Institute - Fundamentals of Welding	3	3	100.00%	1	3	33.33%	\$ 8,593.49
Bill Priest Institute - Industrial Maintenance Level 3	1	1	100.00%	1	1	100.00%	\$ 1,232.00
Careers Institute of America - Air Conditioning, Heating and Refrigeration Technician	3	3	100.00%	1	3	33.33%	\$ 5,797.50
Cedar Valley College (DCCCD) - Diesel and Heavy Equipment--Preventive Maintenance Technician	1	1	100.00%	0	1	0.00%	\$ 9,385.66
Eastfield College - Air Conditioning & Refrigeration - Residential Technician I	1	1	100.00%	1	1	100.00%	\$ 1,525.36
Eastfield College - Air Conditioning & Refrigeration - Residential Technician III	1	2	50.00%	0	2	0.00%	\$ 15,318.70
Hogg's Automotive Training Academy, Inc. - Basic Automotive Air Conditioning & Heating System	1	1	100.00%	0	1	0.00%	\$ 3,162.65
Hogg's Automotive Training Academy, Inc. - Basic Automotive Transmission Repair/Overhaul	1	1	100.00%	0	1	0.00%	\$ 5,342.43
Lindsey-Cooper Refrigeration School - Refrigeration/Heating/Air Conditioning (Basic) in English	7	10	70.00%	5	5	100.00%	\$ 6,622.31
Lindsey-Cooper Refrigeration School - EPA Certification Seminar	1	2	50.00%	1	2	50.00%	\$ 2,062.00
Miller Crane Works, Inc. - MOBILE CRANE OPERATIONS FIXED/SWING CAB LEVEL 1	1	3	33.33%	3	6	50.00%	\$ 12,616.11
Miller Crane Works, Inc. - Tower Crane Operations Level I	4	4	100.00%	5	5	100.00%	\$ 3,325.51
Miller Crane Works, Inc. - Tower Crane Operations Level II	1	1	100.00%	1	1	100.00%	\$ 5,082.94
MT Training Center - CNC Machinist	0	1	0.00%	1	1	100.00%	N/A
Richland College (DCCCD) - Masonry	2	3	66.67%	1	1	100.00%	\$ 1,639.00
Richland College (DCCCD) - Industrial Logistics Technician	1	1	100.00%	0	1	0.00%	\$ 4,014.00
Richland College (DCCCD) - Machine Operator Specialist VER 2.0	17	19	89.47%	7	10	70.00%	\$ 6,737.00
Richland College (DCCCD) - Production Line Technician II	4	4	100.00%	1	1	100.00%	\$ 4,118.00
Richland College (DCCCD) - Manufacturing Employability Skills	1	2	50.00%	1	2	50.00%	\$ 4,721.00
Trucking							
Academy School of Careers - Truck Driving	7	8	87.50%	3	5	60.00%	\$ 9,100.20
Aspire Truck Driving School - Aspire Truck Driving School	4	6	66.67%	5	6	83.33%	\$ 4,198.53
ATDS - Professional Truck Driver-100	7	9	77.78%	6	6	100.00%	\$ 6,031.44
Continental Truck Driver Training and Education School - TTDR-500 Tractor Trailer Basic	30	36	83.33%	13	16	81.25%	\$ 6,606.40

Training Vendor Performance by Program

Entered Employment Q2 and Median Earnings Q2 are WIOA Customers that exited training programs between July 2016 - June 2017

Credential Rate are WIOA Customers that exited training programs January 2016 and December 2017

	Entered Employment Numerator	Entered Employment Denominator	%	Obtained Credential Numerator	Obtained Credential Denominator	%	Mean Quarterly Earnings
Indicates Missing Performance Measure.							
WFSDallas performance indicators	75%			75%			\$5,300
International Schools - Professional Driver Training	64	85	75.29%	44	60	73.33%	\$ 6,440.91
MT Training Center - Advanced CDL Driver Training for the Entrepreneur	4	4	100.00%	3	3	100.00%	\$ 13,116.42
MT Training Center - Truck Driving	5	9	55.56%	8	8	100.00%	\$ 6,592.17
Truck Driver Institute- Custom Motor Carrier Driver Training	7	9	77.78%	3	4	75.00%	\$ 9,092.49
Vision Truck Driving School - Vision Truck Driving	69	88	78.41%	61	64	95.31%	\$ 7,357.17

RECOMMENDATION: Based on Board policy, staff conducts a Training Provider review annually. Training Programs that are missing two or more program goals are recommended for removal. Board authorization to remove Asher College - Computer Specialist and Networking Technician ,New Horizons Computer Learning Center - Network Systems Administrator Professional, CCI Training Center, Inc. - Health Information Specialist - Arlingto, iMed Health Training Center - Health Information Technology. Board authorization to put Richland College's - Accounting/Office Specialis and Aspire Truck Driving School programs on hold for six months.

**MEANS, ENDS AND EXPECTATIONS
DETAIL EXPENDITURE REPORT
JULY, 2018**

Contract Name	Contract #	End Date	Budget	Cumulative Expenses	% Expended	% Expected	Obligations	Total Expenses + Obligations	% Expenses Obligations
WIOA-YOUTH-PROGRAM	0617WOY000	6/30/2019	\$ 3,889,251.00	\$ 2,055,945.43	52.86%	80.00%	\$ 1,328,586.70	\$ 3,384,532.13	87.02%
WIOA-YOUTH-ADMIN	0617WOY000	6/30/2019	\$ 432,139.00	\$ 147,035.10	34.02%	80.00%	\$	\$ 147,035.10	34.02%
TOTAL YOUTH			\$ 4,321,390.00	\$ 2,202,980.53	50.98%	80.00%	\$ 1,328,586.70	\$ 3,531,567.23	81.72%
WIOA-ADULT-PROGRAM	0617WOA000-1	6/30/2019	\$ 3,870,392.00	\$ 2,434,840.68	62.91%	80.00%	\$ 1,086,753.35	\$ 3,521,594.03	90.99%
WIOA-ADULT-ADMIN	0617WOA000-1	6/30/2019	\$ 430,042.00	\$ 258,544.41	60.12%	80.00%	\$	\$ 258,544.41	60.12%
TOTAL ADULT			\$ 4,300,434.00	\$ 2,693,385.09	62.63%	80.00%	\$ 1,086,753.35	\$ 3,780,138.44	87.90%
WIOA-DISLOCATED -PROGRAM	0617WOD000-1	6/30/2019	\$ 3,118,131.00	\$ 1,618,955.91	51.92%	80.00%	\$ 1,345,929.13	\$ 2,964,885.04	95.09%
WIOA-DISLOCATED-ADMIN	0617WOD000-1	6/30/2019	\$ 346,458.00	\$ 54,704.54	15.79%	80.00%	\$	\$ 54,704.54	15.79%
TOTAL DISLOCATED WORKER			\$ 3,464,589.00	\$ 1,673,660.45	48.31%	80.00%	\$ 1,345,929.13	\$ 3,019,589.58	87.16%
TOTALS			\$ 12,086,413.00	\$ 6,570,026.07	54.36%	80.00%	\$ 3,761,269.18	\$ 10,331,295.25	85.48%
WIOA-YOUTH-PROGRAM	0618WOY000	6/30/2020	\$ 4,783,352.00	\$ -	0.00%	8.33%	\$ -	\$ -	0.00%
WIOA-YOUTH-ADMIN	0618WOY000	6/30/2020	\$ 531,483.00	\$ -	0.00%	8.33%	\$	\$ -	0.00%
TOTAL YOUTH			\$ 5,314,835.00	\$ -	0.00%	8.33%	\$ -	\$ -	0.00%
WIOA-ADULT-PROGRAM	0618WOA000	6/30/2020	\$ 882,522.00	\$ -	0.00%	8.33%	\$ -	\$ -	0.00%
WIOA-ADULT-ADMIN	0618WOA000	6/30/2020	\$ 98,058.00	\$ -	0.00%	8.33%	\$	\$ -	0.00%
TOTAL ADULT			\$ 980,580.00	\$ -	0.00%	8.33%	\$ -	\$ -	0.00%
WIOA-DISLOCATED -PROGRAM	0618WOD000	6/30/2020	\$ 773,254.00	\$ -	0.00%	8.33%	\$ -	\$ -	0.00%
WIOA-DISLOCATED-ADMIN	0618WOD000	6/30/2020	\$ 85,917.00	\$ -	0.00%	8.33%	\$	\$ -	0.00%
TOTAL DISLOCATED WORKER			\$ 859,171.00	\$ -	0.00%	8.33%	\$ -	\$ -	0.00%
WIOA-Rapid Response	0618WOR000	6/30/2018	\$ 76,838.00	\$ 1,700.00	2.21%	8.33%	\$ -	\$ 1,700.00	2.21%
NDW-Texas Oil & Gas	0617-NDW000	12/31/2018	\$ 413,022.00	\$ 43,987.89	10.65%	96.15%	\$ 330,846.34	\$ 374,834.23	90.75%
NDW-DISASTER-HURRICANE HARVEY	0617-NDW001-1	9/30/2019	\$ 100,000.00	\$ 47,899.80	47.90%	50.00%	\$ 23,758.27	\$ 71,658.07	71.66%
TOTALS			\$ 7,744,446.00	\$ 93,587.69	1.21%	8.33%	\$ 354,604.61	\$ 448,192.30	5.79%

**MEANS, ENDS AND EXPECTATIONS
MONTHLY EXPENDITURE REPORT
JULY, 2018**

Contract Name	Contract #	End Date	Budget	Cumulative Expenses	% Expended	% Expected	Obligations	Total Expenses + Obligations	% Expenses Obligations
WORKFORCE INNOVATION AND OPPORTUNITY ACT									
WIOA FORMULA FUNDS	0616 WIOA FUNDS	6/30/2017	\$ 12,086,413.00	\$ 6,570,026.07	54.36%	80.00%	\$ 3,761,269.18	\$ 10,331,295.25	85.48%
WIOA FORMULA FUNDS	0617 WIOA FUNDS	6/30/2018	\$ 7,744,446.00	\$ 93,587.69	1.21%	8.33%	\$ 354,604.61	\$ 448,192.30	5.79%
RESOURCE ADMINISTRATION	0618RAG000	9/30/2018	\$ 8,735.00	\$ 6,735.81	77.11%	83.33%	\$ -	\$ 6,735.81	77.11%
TRADE ACT SERCVICES-2018	0618TRA000	12/31/2018	\$ 1,595,580.00	\$ 446,466.36	27.98%	N/A	\$ 866,999.57	\$ 1,313,465.93	82.32%
Reemployment Services and Eligibility Assessment	0618REA000	10/31/2018	\$ 711,119.00	\$ 405,087.17	56.96%	75.00%	\$ 265,138.44	\$ 670,225.61	94.25%
Totals			\$ 22,146,293.00	\$ 7,521,903.10	33.96%		\$ 5,248,011.80	\$ 12,769,914.90	57.66%
WAGNER-PEYSER EMPLOYMENT SERVICE									
EMPLOYMENT SERVICES	0618WPA000	12/31/2018	\$ 576,272.00	\$ 375,700.01	65.19%	66.67%	\$ -	\$ 375,700.01	65.19%
JAG Grant	0618WPB000	11/7/2018	\$ 97,500.00	\$ 69,719.40	71.51%	66.67%	\$ 26,701.24	\$ 96,420.64	98.89%
TX Talent Connection	0618WPB001	8/31/2019	\$ 98,945.00	\$ -	0.00%	13.33%	\$ 26,112.00	\$ 26,112.00	26.39%
WCI- Child Care Conference	0618WCI000-2	9/30/2018	\$ 1,623.00	\$ 1,623.00	100.00%	83.33%	\$ -	\$ 1,623.00	100.00%
WCI- Foster Care Youth Conference	"	"	\$ 739.00	\$ -	0.00%	83.33%	\$ -	\$ -	0.00%
WCI- Red, White, and You+	"	"	\$ 32,000.00	\$ 31,768.78	99.28%	83.33%	\$ -	\$ 31,768.78	99.28%
WCI- TVLP Operating Grant Activities	"	"	\$ 8,584.00	\$ 7,153.26	83.33%	83.33%	\$ -	\$ 7,153.26	83.33%
WCI- Carrers in TX Industry Week/Youth Career F	"	"	\$ 50,000.00	\$ -	0.00%	83.33%	\$ -	\$ -	0.00%
Totals			\$ 865,663.00	\$ 485,964.45	56.14%		\$ 52,813.24	\$ 538,777.69	62.24%
FOOD STAMP EMPLOYMENT AND TRAINING									
Suppl. Nutrition Assistance Program	0618SNEA000	9/30/2018	\$ 663,896.84	\$ 380,623.26	57.33%	66.67%	\$ 88,181.92	\$ 468,805.18	70.61%
Totals			\$ 663,896.84	\$ 380,623.26	57.33%		\$ 88,181.92	\$ 468,805.18	70.61%
TEMPORARY ASSISTANCE FOR NEED FAMILIES									
NONCUSTODIAL PARENT CHOICES PRGM	0618NCP000	9/30/2018	\$ 470,540.00	\$ 272,206.23	57.85%	76.92%	\$ 137,212.30	\$ 409,418.53	87.01%
TEMPORARY ASSISTANCE NEEDY FAMILIES	0618TAN000	10/31/2018	\$ 8,590,376.00	\$ 6,748,337.01	78.56%	76.92%	\$ 1,652,733.06	\$ 8,401,070.07	97.80%
Totals			\$ 9,060,916.00	\$ 7,020,543.24	77.48%		\$ 1,789,945.36	\$ 8,810,488.60	97.24%
CHILD CARE SERVICES									
CCF CCMS CHILD CARE	0618CCF000-3	12/31/2018	\$ 53,673,491.00	\$ 34,084,819.70	63.50%	66.67%	\$ 19,232,061.90	\$ 53,316,881.60	99.34%
CHILD CARE ATTENDANCE AUTOMATION	0618CAA000-1	11/30/2018	\$ 374,263.00	\$ 329,381.79	88.01%	83.33%	\$ 44,881.21	\$ 374,263.00	100.00%
CCM CCMS LOCAL INITIATIVE	0618CCM000-1	12/31/2018	\$ 9,079,355.00	\$ -	0.00%	66.67%	\$ 9,079,355.00	\$ 9,079,355.00	100.00%
CHILD CARE DFPS	0618CCP000-1	12/31/2018	\$ 6,660,587.00	\$ 5,877,952.09	88.25%	91.67%	\$ 782,634.91	\$ 6,660,587.00	100.00%
CHILD CARE QUALITY	0618CCQ000	10/31/2018	\$ 1,554,181.00	\$ 1,047,502.32	67.40%	76.92%	\$ 370,129.13	\$ 1,417,631.45	91.21%

**MEANS, ENDS AND EXPECTATIONS
MONTHLY EXPENDITURE REPORT
JULY, 2018**

Contract Name	Contract #	End Date	Budget	Cumulative Expenses	% Expended	% Expected	Obligations	Total Expenses + Obligations	% Expenses Obligations
Totals			\$ 71,341,877.00	\$ 41,339,655.90	57.95%		\$ 29,509,062.15	\$ 70,848,718.05	99.31%
STATE OF TEXAS									
ADULT EDUCATION AND LITERACY	0618ALA000	6/30/2020	\$ 5,945,470.00	\$ 507,731.33	8.54%	4.17%	\$ -	\$ 507,731.33	8.54%
Totals			\$ 5,945,470.00	\$ 507,731.33	8.54%		\$ -	\$ 507,731.33	8.54%
GRAND TOTALS			\$ 110,024,115.84	\$ 57,256,421.28	52.04%		\$ 36,688,014.47	\$ 93,944,435.75	85.39%
STATE OF TEXAS - Contracts									
Summer Earn and Learn	3018VRS106	9/30/2018	\$ 540,000.00	\$ 336,628.07	62.34%	N/A	\$ 162,949.12	\$ 499,577.19	92.51%
Student Hireability Navigator	3018VRS135	8/31/2019	\$ 300,000.00	\$ 15,342.28	5.11%	N/A	\$ 224,657.72	\$ 240,000.00	80.00%
Wage Services for Paid Work Experience	3018VRS173	9/30/2019	\$ 225,000.00	\$ -	0.00%	N/A	\$ -	\$ -	0.00%
Infrastructure Support Services and Shared Cost	0618COL000	8/31/2018	\$ 39,223.00	\$ 28,479.25	72.61%	N/A	\$ -	\$ 28,479.25	72.61%
Totals			\$ 1,104,223.00	\$ 380,449.60	34.45%		\$ 387,606.84	\$ 768,056.44	69.56%
PRIVATE									
DOL-LEAP GRANT	DOL	9/30/2018	\$ 500,000.00	\$ 41,503.48	8.30%	91.67%	\$ 408,496.52	\$ 450,000.00	90.00%
TEXAS VETERANS COMMISSION	TVC	9/30/2018	\$ 117,600.00	\$ 136,106.27	115.74%	83.33%	\$ -	\$ 136,106.27	115.74%
100K OPPORTUNITIES INITIATIVE	Starbucks/Schultz Foundation	5/11/2018	\$ 250,000.00	\$ 226,536.60	90.61%	100.00%	\$ -	\$ 226,536.60	90.61%
RETAIL PIPELINE PROJECT (RETAIL PAY\$)	Walmart Foundation	11/30/2019	\$ 1,771,576.00	\$ 183,884.74	10.38%	27.27%	\$ 1,222,601.82	\$ 1,406,486.56	79.39%
HCA PARTNERSHIP INITIATIVE	0603WDR000	OPEN	\$ 431,833.04	\$ 382,095.58	88.48%	N/A	\$ -	\$ 382,095.58	88.48%
Totals			\$ 3,071,009.04	\$ 970,126.67	31.59%		\$ 1,631,098.34	\$ 2,601,225.01	84.70%

Workforce Solutions Greater Dallas
 Statements of Financial Position (Unaudited)
 July 31, 2018 and December 31, 2017

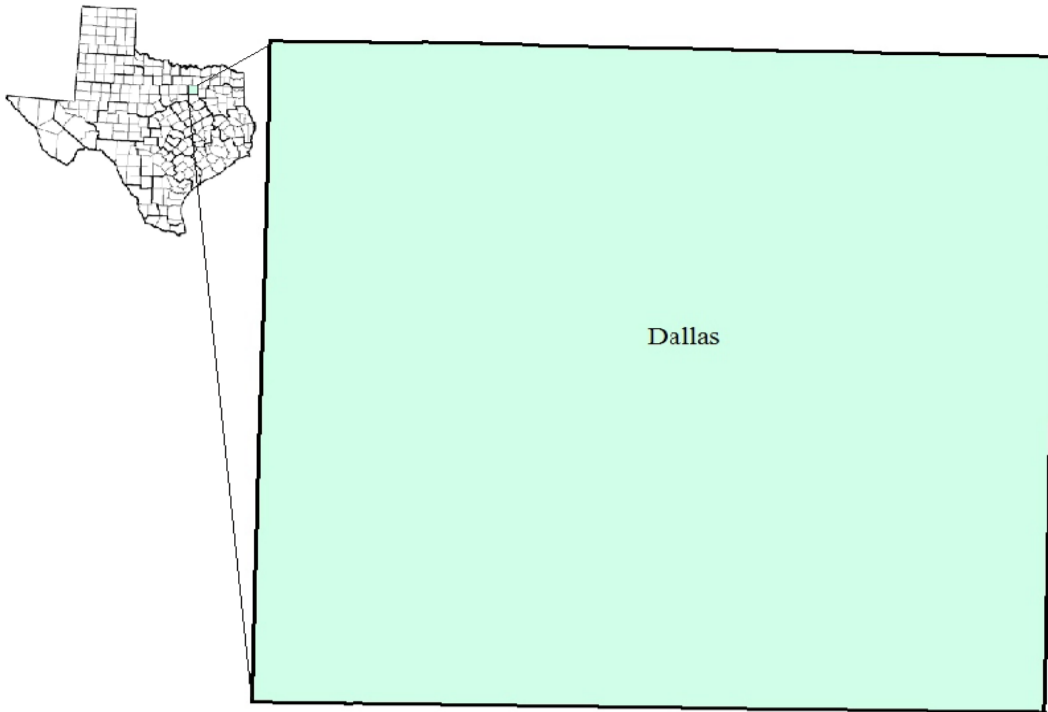
	<u>7/31/2018</u> <u>(Unaudited)</u>	<u>12/31/2017</u> <u>(Audited)</u>
ASSETS		
Cash	\$ 5,774,669	3,707,042
Grants receivable	7,670,742	10,783,445
Advances and other receivables	310,443	20,641
Prepaid expenses	23,326	548,319
Investment	611,120	611,120
Equipment, net	—	—
Total assets	<u>\$ 14,390,300</u>	<u>15,670,567</u>
LIABILITIES AND NET ASSETS		
Accounts payable and accrued liabilities	\$ 10,546,474	13,264,361
Employee benefits payable	611,120	611,120
Deferred revenue	1,289,039	1,289,039
Total liabilities	<u>12,446,633</u>	<u>15,164,520</u>
Net Assets		
Net assets without donor restrictions	332,513	321,461
Net assets with donor restrictions	<u>1,611,154</u>	<u>184,586</u>
Total net assets	<u>1,943,667</u>	<u>506,047</u>
Total liabilities and net assets	<u>\$ 14,390,300</u>	<u>15,670,567</u>

Workforce Solutions Greater Dallas
 Statements of Activities (Unaudited)
 Period ended July 31, 2018 and December 31, 2017

	<u>07/31/2018 (Unaudited)</u>			<u>12/31/2017 (Audited)</u>		
	<u>Without Donor</u> <u>Restrictions</u>	<u>With Donor</u> <u>Restrictions</u>	<u>Total</u>	<u>Without Donor</u> <u>Restrictions</u>	<u>With Donor</u> <u>Restrictions</u>	<u>Total</u>
Revenues and other support:						
Revenues from grants and contracts	55,553,333	1,587,691	57,141,024	98,250,858	184,586	98,435,444
Other	13,054	—	13,054	66,284	—	66,284
Income from investments:			—	—		—
Dividends & interest	11,052	—	11,052	16,810	—	16,810
Net realized/unrealized gain	—	—	—	109,995	—	109,995
Net assets released from restrictions	161,123	(161,123)	—	—	—	—
Total revenues and other support	<u>55,738,562</u>	<u>1,426,568</u>	<u>57,165,130</u>	<u>98,443,947</u>	<u>184,586</u>	<u>98,628,533</u>
Expenses:						
Direct program services	53,741,624	—	53,741,624	95,052,911	—	95,052,911
Administration	1,985,886	—	1,985,886	3,236,480	—	3,236,480
Employee benefits	—	—	—	109,995	—	109,995
Total expenses	<u>55,727,510</u>	<u>—</u>	<u>55,727,510</u>	<u>98,399,386</u>	<u>—</u>	<u>98,399,386</u>
Change in net assets	11,052	1,426,568	1,437,620	44,561	184,586	229,147
Net assets, beginning of year	321,461	184,586	506,047	276,900	—	276,900
Net assets, end of year	<u>\$ 332,513</u>	<u>\$ 1,611,154</u>	<u>\$ 1,943,667</u>	<u>\$ 321,461</u>	<u>\$ 184,586</u>	<u>\$ 506,047</u>

Dallas County Workforce Development Area

July 2018



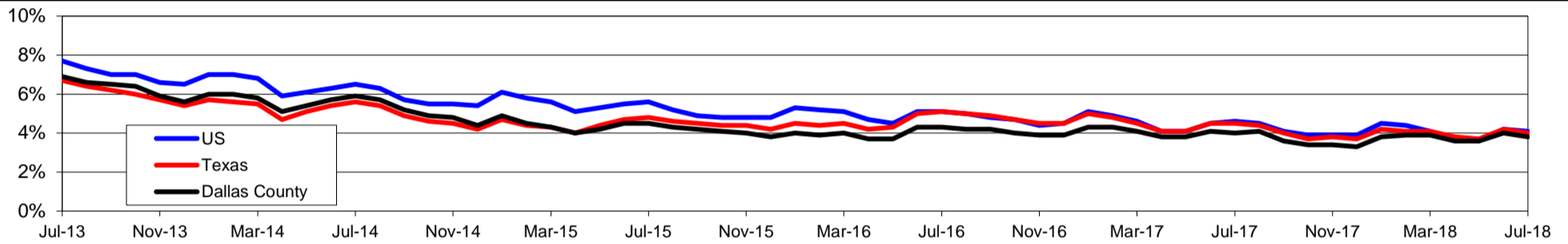
WDA Labor Force Statistics				
	Jul-18	Jun-18	Jul-17	OTY
CLF	1,380,202	1,375,007	1,340,338	39,864
Employed	1,327,127	1,320,201	1,286,380	40,747
Unemployed	53,075	54,806	53,958	-883
Rate	3.8%	4.0%	4.0%	-0.2%

Texas Labor Force Statistics				
	Jul-18	Jun-18	Jul-17	OTY
CLF	13,840,527	13,844,974	13,571,881	268,646
Employed	13,283,897	13,262,013	12,967,640	316,257
Unemployed	556,630	582,961	604,241	-47,611
Rate	4.0%	4.2%	4.5%	-0.5%

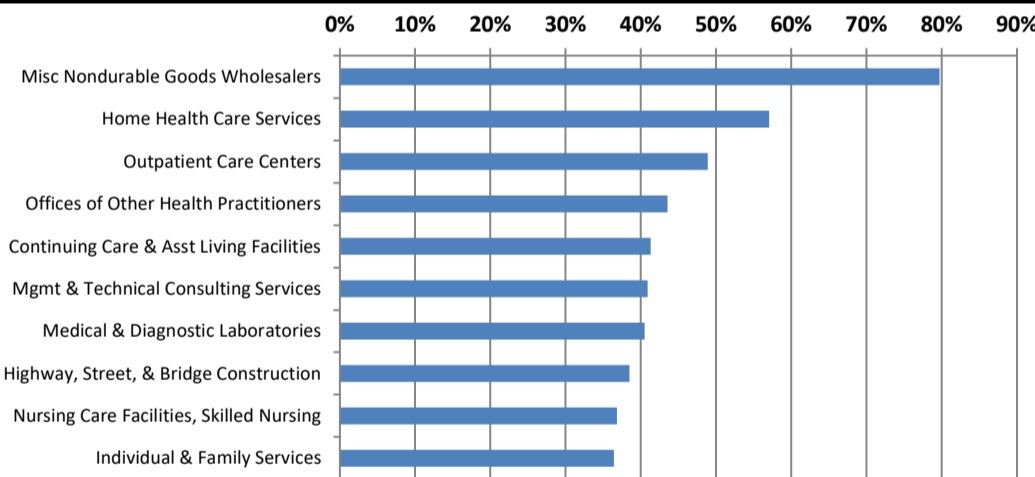
US Labor Force Statistics				
	Jul-18	Jun-18	Jul-17	OTY
CLF	163,734,000	163,277,000	161,911,000	1,823,000
Employed	157,004,000	156,465,000	154,470,000	2,534,000
Unemployed	6,730,000	6,812,000	7,441,000	-711,000
Rate	4.1%	4.2%	4.6%	-0.5%

Continued Claims for the Week of the 12th				
	Jul-18	Jun-18	Jul-17	OTY
WDA	10,968	10,574	11,434	-466
Texas	102,645	101,223	124,432	-21,787

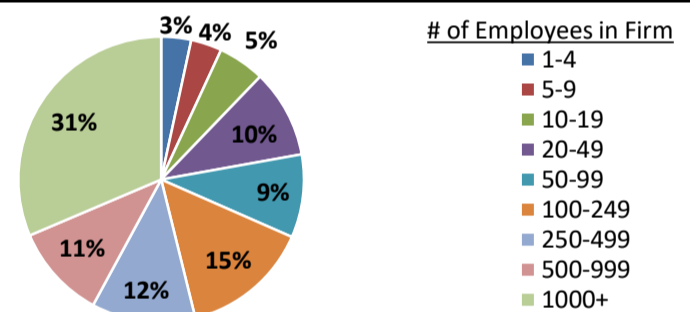
Historical Unemployment Rates



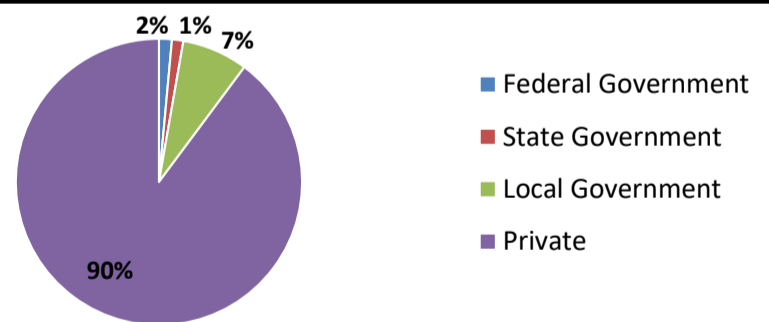
Projected Fastest Growing Industries in WDA (% growth 2014-2024)



Employment by Size Class (4th Quarter 2017)



Employment by Ownership (4th Quarter 2017)



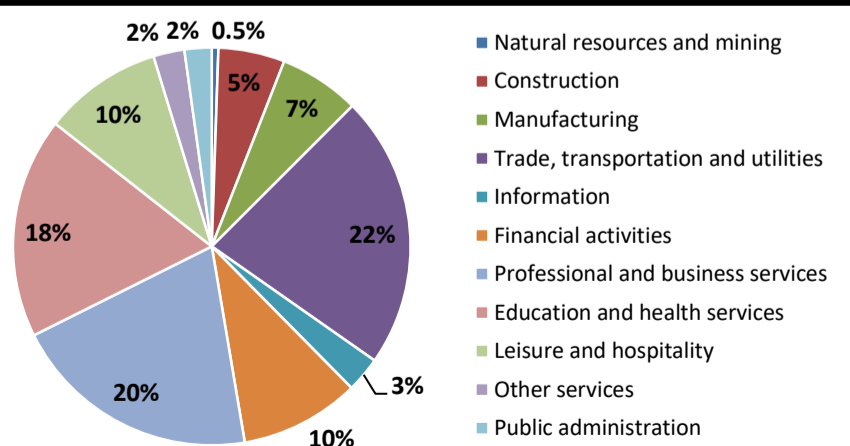
Average Weekly Wage (4th Quarter 2017)

	Q4 2017	Q3 2017	Q4 2016	Change	
				Quarter	Year
WDA	\$1,318	\$1,213	\$1,279	\$105	\$39
Texas	\$1,109	\$1,032	\$1,072	\$77	\$37
US	\$1,109	\$1,020	\$1,067	\$89	\$42

Employment by Industry (4th Quarter 2017, Percent Change)

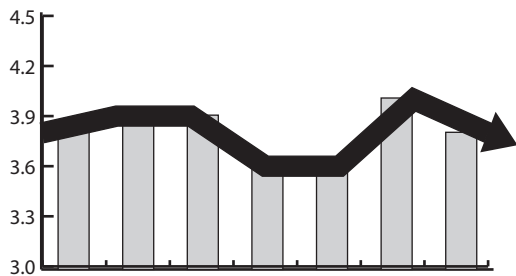
Industry	Employment	% of total	% Change	
			Quarter	Year
Natural resources and mining	9,228	0.5%	5.6%	8.9%
Construction	92,411	5.4%	0.5%	3.6%
Manufacturing	112,376	6.6%	-0.8%	2.5%
Trade, transportation and utilities	380,065	22.2%	4.1%	2.7%
Information	49,036	2.9%	-0.8%	-1.2%
Financial activities	166,715	9.7%	0.1%	3.2%
Professional and business services	347,116	20.3%	1.1%	1.0%
Education and health services	307,317	18.0%	2.1%	0.9%
Leisure and hospitality	165,513	9.7%	-0.4%	0.6%
Other services	43,222	2.5%	0.0%	1.4%
Public administration	37,736	2.2%	0.0%	-1.0%
Total	1,710,735	100.0%	1.5%	1.7%

Employment by Industry (4th Quarter 2017)



UNEMPLOYMENT

IN DALLAS COUNTY



REPORTING RATE **3.8%**
PREVIOUS MONTH RATE **4.0%**
PREVIOUS 12 MONTHS RATE **3.7%**

UNEMPLOYMENT RATE SUMMARY:

- ◊ THE UNEMPLOYMENT RATE 3.8% AS OF JULY;
- ◊ THE NUMBER OF UNEMPLOYED RESIDENTS SHOWED A SLIGHT DECREASE OF APPROXIMATELY 3% FROM THE PREVIOUS MONTH AND ROUGHLY NO CHANGE FROM THE LAST 12 MONTHS.

SOURCES: BUREAU OF LABOR STATISTICS, TLMR, TWC

DALLAS COUNTY LAYOFF SUMMARY:

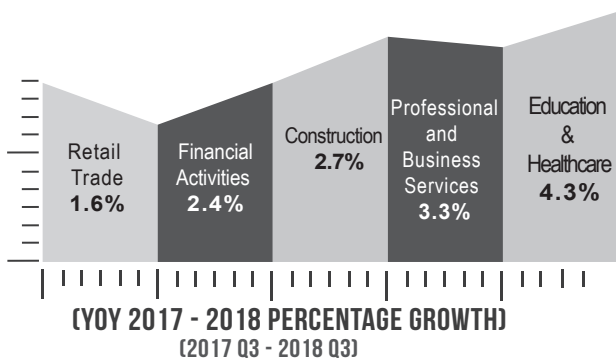
- ◊ LAYOFFS DECREASED BY 27% YEAR OVER YEAR;
- ◊ DURING Q3 OF 2017, THERE WERE 1,349 LAYOFFS; IN Q3 OF 2018, THERE HAVE BEEN 849.
- ◊ 88% OF 2018 Q3 LAYOFFS CAN BE ATTRIBUTED TO THE HEALTH CARE INDUSTRY.
- ◊ HEALTH CARE ACCOUNTS FOR 11.2% OF EMPLOYEES, AND 11.4% OF ALL ESTABLISHMENTS

SOURCES: TWC

LAYOFFS IN DALLAS CO.

LAYOFFS IN DALLAS COUNTY
DOWN
27%
(YOY 2017 -2018)

EMPLOYMENT TRENDS



JOB ACTIVITY:

LARGEST GAIN ↑ (JOB COUNT)
Professional and Business Services
11,903

LARGEST DECLINE ↓
Manufacturing
2,101

JOB GROWTH:

- ◊ AS OF JULY, DALLAS AREA JOB GROWTH UP 41K YOY 2017
- ◊ DALLAS AREA JOB GROWTH (3.2%) OUTPACED JOB GROWTH IN TEXAS (2.4%) AND THE US (1.6%) YEAR OVER YEAR.

SOURCES: BLS, EMSI 2017.3, 2018.3

CORPORATE EXPANSIONS & RELOCATIONS

NutriBiotech	Garland	1,600	2017	Expansion
Gartner	Irving	800	2017	Expansion
AMN Healthcare Svc	Dallas	650	2018	HQ Relocation
Vistaprint	Dallas	600	2018	New Facility
Taiyo America	Dallas	500	2017	New Facility
Quest Windows Sys	Garland	320	2018	New Facility
Pacific Dental Svc	Irving	253	2018	HQ Relocation
Stratus Video	Dallas	200	2017	New Facility
Oculus Health	Irving	200	2017	HQ Relocation
Sam's West, Inc	Dallas	100	2018	New Facility
Total Jobs		5,223		

CORPORATE ACTIVITY

- ◊ APPROXIMATELY 39 CORPORATE RELOCATIONS AND EXPANSIONS WITHIN THE LAST YEAR INTO THE DFW REGION. SIGNIFICANT GROWTH BY INDUSTRY INCLUDES: PROFESSIONAL SERVICES AND HEALTH CARE.

SOURCES: DALLAS REGIONAL CHAMBER

ES 2020 Sector Report

September 2018

INFORMATION TECHNOLOGY

Lynn Hoffman, Senior Employer Service Manager
lhoffman@wfsdallas.com, 214.290.1042



- Attended **Cognizant's Regional Delivery Center** grand opening in Irving, TX. Special Guests included Texas Governor Greg Abbott and TWC Chair Ruth Hughs.
- Presented workforce services to veterans at the **Amazon Web Services (AWS)** apprenticeship info session. Will provide training assistance to at least 2 of the 4 selected candidates.



August 29th

TWC Chair Ruth R. Hughs joined **Gov. Greg Abbott** for a ribbon cutting ceremony at **Cognizant's** new training center in Irving, Texas. Cognizant is a multinational corporation that provides IT services, including digital technology, consulting and operation services. Cognizant said it expects to train more than 1,000 people at the state-of-the-art 50,000 sq. ft. facility over the next 36 months. President Laurie Bouillion Larrea, V.P. Linda Davis and Sr. Employer Service Mgr. Lynn Hoffman were invited guests.

Consulted with Federal Highway Administration (FHWA) workforce project leaders in Arizona regarding their efforts, successes, challenges and lessons through the pilot project in the Phoenix area.



INFRASTRUCTURE

Kent Andersen, Account Executive,
kandersen@wfsdallas.com, 214.290.1019



We continue to connect construction associations and employers with school districts and education and training initiatives to prepare the future workforce for targeted industries that are crucial to the regional economy. In August, the Account Executive team presented "Resources for Employer Engagement" to the Workplace Learning Coordinators from the **Dallas Independent School District Collegiate Academies** to further this effort.

ADVANCED MANUFACTURING

Steven Bridges, Account Executive
sbridges@wfsdallas.com, 214.290.1015



Richland College
DALLAS COUNTY COMMUNITY COLLEGE DISTRICT

August 16

Dallas County Manufacturing Association

employers participated in an open house at the Gilbreath-Reed Career and Technical Center in Garland to promote career paths and industry awareness to students and parents during the event. The Tech Center expands the opportunities available to district students with new programs, certifications and advanced-level courses. Courses are all taught by industry experts in a state-of-the-art learning environment.



RETAIL

Lynn Hoffman, Senior Employer Service Manager
lhoffman@wfsdallas.com, 214.290.1042



- 950 Samsung Tablets were purchased at a discount from Walmart for Retail Pay\$ learners to access DCCCD and Penn Foster online courses.
- Seventy-seven CVS Health and DART employees started Retail Management and Supervisor training.
- Attended two local Amazon Career Choice career fairs and assisted HQ with employer outreach within the region.

Community Engagement Report
September 2018



August 23rd

Nine employers and 1417 job seekers attended the **2nd Annual Your're Hired Job Fest** at Gilley's Dallas. Focused on logistics and distribution job opportunities, over 5,000 jobs were available with wages ranging from \$12.00-\$25.00/hour. To date employers have reported hiring 282 (20%) of those attending. The numbers are expected to increase once UPS is able to report outcomes.



September 5th

TWC Commissioner Julian Alvarez presented a Skills Development Fund check at Cedar Valley College for \$1,282,202. Grant beneficiaries include FFE Transportation Services Inc., KLLM Transport Services LLC, Lone Star Aerospace Inc., Syncreon America, and WNA Cups Illustrated Inc. Board Director Dr. Joe May and Dr. Joe Seabrook spoke during the presentation.





August 3

Staff from the Mesquite WFC collaborated with Verna's H.E.L.P. Foundation and Mesquite Friendship Baptist Church on an event that included 25+ employers and resource organizations. Some of the employers and agencies that attended included: City of Dallas, City of Mesquite, Tom Thumb/Albertsons, Unlocking Doors, UniCorp Services, Dallas County Community Courts, HUD VASH, Mister Carwash (Mesquite Employer), Onin Staffing, Dean Foods/ Oak Farms, and Amazon. Approximately 190 job seekers attended and over 100 interviews were scheduled as a result of this event.



ResCare Community Outreach Update

Community Outreach staff attended multiple events in August including MISD Back to School Fair at Poteet High School (photo on the right); Supplies for Success Community Fair (Irving High School); Amazon Career Fair; Dallas Police Department: Project Safe Neighborhood. New Partners: Polaris properties which owns multiple properties in Mesquite and South Dallas. On-site orientations are scheduled through the end of the year at two properties in Mesquite to inform tenants about Workforce Services.

September 12

WFSDallas hosted a meeting with the City of Dallas to help connect the dots between resettlement, workforce, education and citizenship. Judge Jenkins was a key presenter.



**2018
Job Fair
Calendar**

September	October	November	December
D23 Goes2Work Job Fair Southwest Mall 9/20 10am-2pm	National Manufacturing Day 10/05 DCMA Breakfast Richland College Garland Campus 7:30am-10:00am	Hiring Red White & You Job Fair Gilley's Dallas 11/08 10am-2pm	Rep. Veasy's Hiring Event Mountain View College 12/03 10am-2pm

**President's Briefing—Item A
Tax Filing 2017**

Board directors have received the IRS Form 990 for 2017 in preparation for filing by Crowe LLC.

RECOMMENDATION: Staff requests board acceptance and approval to submit IRS Form 990 for 2017.

**President's Briefing—Item B
Authorization of Contracts, Partnerships, and Agreements**

PY18/FY19 Allocations

The Board's program year is July through June and our fiscal year is October to September. With the multiple grants that we receive, our funds are allocated and disbursed upon receipt of grants. Annually, eligible contracts are reviewed for renewal. The Board's contracts with current contractors listed below will expire September 30th and requires us to let new contracts. The proposed budgets are based upon existing and enhanced services, available grant funds, and negotiated terms. The list below includes the contractors' proposed budget amounts for fiscal year 2019 (*October 1, 2018 through September 30, 2019*):

I. FY19 Professional Services Contracts

Professional Services Contractors	2019 Proposed Budget
Christine H. Nguyen, CPA – Financial Monitor	\$160,575
Juanita Forbes & Associates – Program Compliance Monitor	\$183,168
QNet – Technology Services	\$250,440
Oriental Building Services, Inc. – Janitorial Services	\$48,500

II. FY19 Workforce Innovation and Opportunity Act (WIOA) Youth Services Contracts

Youth Services Contract	2019 Proposed Budget
ResCare Workforce Services	\$1,660,637
DCCCD-Richland College (Garland Campus)	\$ 550,000
Gulf Coast Trades Center	\$ 175,000

III. FY19 ResCare Workforce Services (Workforce System Operations) Contract

ResCare's existing 11-month contract for workforce system operations will end at September 30th. The proposed 12-month initial contract budget consists of operations and pass-through funds to customers based prior year expenditures, planned allocations provided by TWC and actual grants received at this time. The profit matrix is usually presented at this time; however, the performance targets are still being negotiated with Texas Workforce Commission. We will bring a negotiated profit matrix back to the Board.

Grant	2019 Initial Contract Budget
Workforce Innovation and Opportunity Act – Adult 9 month budget/12-month operating	\$ 3,287,983
Workforce Innovation and Opportunity Act - Dislocated Worker 9 month budget/12-month operating	\$ 2,788,792
Workforce Innovation and Opportunity Act – Rapid Response	\$ 30,000
<i>Temporary Assistant to Needy Families*</i>	<i>\$ 6,088,226</i>
<i>SNAP E&T*</i>	<i>\$ 727,267</i>
<i>SNAP ABAWD*</i>	<i>\$ 182,141</i>
<i>Non-Custodial Parent *</i>	<i>\$ 271,978</i>

Trade Adjustment Assistance*	\$ 752,202
Wagner-Peyser Employment Services*	\$ 68,391
Total Contract	\$14,196,980

*TANF, SNAP, NCP, TAA, and ES grants have not been received, and will be contracted contingent upon receipt of grant.

RECOMMENDATION: Board authorization to contract with the existing contractors with the 2019 proposed budget amounts as presented above, effective October 1, 2018 through September 30, 2019. These figures do not include probable carryover funds and any additional amounts will be brought back to the Board for approval.

IV. ChildCareGroup (Child Care Assistance) Contract Amendment

ChildCareGroup's existing contract ends September 30th. However, Texas Workforce Commission has extended all child care grant funds through December after re-opening enrollments. Staff is requesting to extend CCG's existing contract through October 31, 2018 as CCG evaluates the enrollment process and staffing needs. This will ensure the services are uninterrupted. The FY19 contract budget will be presented to the Board in October for ratification with an effective date retro to October 1, 2018.

RECOMMENDATION: Board authorization to extend the existing contract with ChildCareGroup to continue providing services through October 31, 2018, with a final FY19 contract budget presented in October.

V. Childcare Local Match Partner Agreements

The 2019 fiscal year total amount of local match required to access the federal child care funds is **\$4,571,562**. Staff request agreements with the following partners to secure local match funds in the amount of **\$1,000,000** at this time. Staff continues to secure uncommitted funds and will bring additional partners for ratification in October. The table below represents the total amount of local match funds secured from the listed partners:

Local Match Partners	Local Amount	Federal Amount
Richardson ISD	\$1,000,000	\$1,988,246
Total	\$1,000,000	\$1,988,246

RECOMMENDATION: Board authorization to accept contributions for Local Match agreements as specified above with Richardson ISD as part of the CCG FY19 contract to provide direct care to eligible children in Dallas.

RFQ for Consultation Services

This item will be presented as a hand-out at the board meeting.

President's Briefing Item – C

Policy

WIOA Training Provider policy T0108 - is amended to clarify apprenticeship training on the Eligible Training Provider System. Apprenticeship programs are automatically approved when they are submitted to the ETP system no matter the occupation or cost of the training. This policy would extend current training criteria to apprenticeship programs. Support for apprenticeship training is limited to occupations on our targeted occupations list and has a maximum training cap of \$12,000.

Parking – this item will be discussed during closed session.

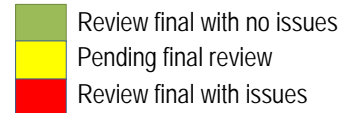
RECOMMENDATION: Board authorization to approve policies as presented and discussed in closed session.

President's Briefing Item – D

Leases

Lease discussions will require a closed session. Formal action will be presented in October.

Quality Assurance and Oversight – President’s Briefing – Item E



February 2017 Gulf Coast Trades DC.05-17.GC WIOA Youth		Program Review of Youth- WIA/WIOA. Recommendations were made relating to the following areas: Eligibility, Youth Eligibility, Youth Program Design, Youth Components/Elements, Case Management, Support Services, Employment, TWIST, and Data Entry. Status: Contractor response was incomplete and requested additional information.
January 2017 ChildCareGroup Childcare		Fiscal Review of Child Care Services. Recommendations were made relating to the following areas: Expenditure disbursements and procurements. Status: Pending Contractor re-payment of \$47,047. Contractor proposing stand-in costs. Pending review by staff to close.
May 22-30, 2017 ResCare TAA DC.06-17.TAA.RC		Program Review of TAA. Recommendations were made relating to the following areas: Reemployment and training plan, training, and case management. Status: Review final with no questioned costs.
July 2017 ResCare SNAP E&T DC.08-17.SNAP.RC		Program Review of SNAP. Recommendations were made relating to the following areas: Case management. Status: Review final with no questioned costs.
September 2017 ResCare DC 10-17 WIOA Adult		Program Review of WIOA – Adult. Recommendations were made relating to the following areas: Adult service priority, individualized career services, activities reported in counselor notes, support services, and information in TWIST. Status: Report issued. Contractor issued response. Pending monitor response.
November 2016 ResCare DC01-17 WIOA Youth		Program Review of WIOA – Youth. Recommendations were made relating to the following areas: Basic Eligibility, Youth Eligibility, Program Design, Assessment, Youth Components/Elements, Case Management Support Services, Employment, TWIST, and Data Entry. Status: Pending contractor response.
CCG DC01.18		Program Review of Child Care Services. Recommendations were made relating to the following areas: eligibility, parent share of cost, and data integrity. Status: Report issued. Pending contractor response.
September 2017 ResCare DC 11-17 WIOA Youth		Program Review of Youth- WIA/WIOA. Recommendations were made relating to the following areas: Eligibility, Youth Eligibility, Youth Program Design, Youth Components/Elements, Case Management, Support Services, Employment, TWIST, and Data Entry. Status: Contractor response received. Pending monitor response.